

Product Data Sheet

Goat Anti-Rabbit IgG (H&L)-HRP polymer (Ready to use)

Catalog #	Source	Reactivity	Applications
CSA9105	Goat	Rb	E, WB, IH, IC
Description	Ready to use Goat Polyclonal Secondary Antibody to Rabbit IgG (H&L) HRP polymer labeled		
Immunogen	Rabbit IgG		
Purification	Goat Polyclonal Secondary Antibody to Rabbit IgG (H&L) have been cross-adsorbed against IgG from bovine, goat, guinea pig, hamster, horse, mouse, rat, and human. Cross-adsorption or pre-adsorption is a purification step to increase specificity of the antibody resulting in less background staining and cross-reactivity. The secondary antibody solution is passed through a column matrix containing immobilized serum proteins from potentially cross-reactive species. Only the nonspecific-binding secondary antibodies are captured in the column, and the highly specific secondaries flow through. Further passages through additional columns result in highly cross-adsorbed preparations of secondary antibody. The benefits of these extra steps are apparent in multiplexing/multicolor-staining experiments where there is potential cross-reactivity with other primary antibodies or in tissue/cell fluorescent staining experiments where there may be the presence of endogenous immunoglobulins.		
Specificity	By immunoelectrophoresis and ELISA this antibody reacts specifically with Rabbit IgG. No antibody was detected against non immunoglobulin serum proteins.		
Clonality	Polyclonal		
Conjugation	HRP polymer		
Form	Liquid in PBS, pH 7.2, containing 1% BSA, 0.05% Proclin		

Application key: E- ELISA, WB- Western blot, IH- Immunohistochemistry, IF- Immunofluorescence, FC- Flow cytometry, IC- Immunocytochemistry, IP- Immunoprecipitation, ChIP- Chromatin Immunoprecipitation, EMSA- Electrophoretic Mobility Shift Assay, BL- Blocking, SE- Sandwich ELISA, CBE- Cell-based ELISA, RNAi- RNA interference

Species reactivity key: H- Human, M- Mouse, R- Rat, B- Bovine, C- Chicken, D- Dog, G- Goat, Mk- Monkey, P- Pig, Rb- Rabbit, S- Sheep, Z- Zebrafish

COHESION BIOSCIENCES LIMITED

WEB
www.cohesionbio.com

ORDER
order@cohesionbio.com

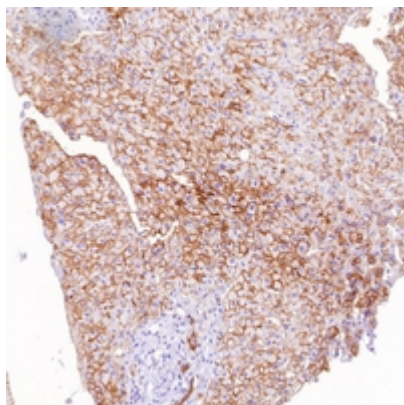
SUPPORT
techsupport@cohesionbio.com

CUSTOM
custom@cohesionbio.com

Product Data Sheet

Dilution Ready to use

Storage/Stability Shipped and store at 4°C for one year.



Immunohistochemical analysis staining in human liver carcinoma formalin fixed paraffin-embedded tissue section. The section was pre-treated using pressure cooker heat antigen retrieval with sodium citrate buffer (0.01M, pH=6) for 3 minutes. The section was detected using rabbit primary antibody, and Goat Anti-Rabbit IgG (H&L)-HRP polymer (Ready to use). The section was then counterstained with haematoxylin and mounted with Neutral Gum.

Application key: E- ELISA, WB- Western blot, IH- Immunohistochemistry, IF- Immunofluorescence, FC- Flow cytometry, IC- Immunocytochemistry, IP- Immunoprecipitation, ChIP- Chromatin Immunoprecipitation, EMSA- Electrophoretic Mobility Shift Assay, BL- Blocking, SE- Sandwich ELISA, CBE- Cell-based ELISA, RNAi- RNA interference

Species reactivity key: H- Human, M- Mouse, R- Rat, B- Bovine, C- Chicken, D- Dog, G- Goat, Mk- Monkey, P- Pig, Rb- Rabbit, S- Sheep, Z- Zebrafish

COHESION BIOSCIENCES LIMITED

WEB
www.cohesionbio.com

ORDER
order@cohesionbio.com

SUPPORT
techsupport@cohesionbio.com

CUSTOM
custom@cohesionbio.com