

Product Data Sheet

Recombinant COVID-19 S-trimer Protein (Omicron, BA.2)

| Catalog # | Source | Reactivity | Applications |
|---------------------------|---|------------|---------------------|
| CRP3138 | Human cells | COVID-19 | E, WB, SDS-PAGE, MS |
| Description | Recombinant COVID-19 S-trimer Protein (Omicron, BA.2) is produced by our mammalian expression system and the target gene encoding Ser13-Gln1208 is expressed with a 6His tag at the C-terminus. T19I, LPPA24S, G142D, V213G, G339D, S371F, S373P, S375F, T376A, D405N, R408S, K417N, N440K, S477N, T478K, E484A, Q493R, Q498R, N501Y, Y505H, D614G, H655Y, N679K, P681H, N764K, D796Y, Q954H and N969K mutations were identified in the COVID-19 variant (known as BA.2 lineage) which emerged in the United Kingdom. Six proline substitutions and furin cleavage site substitutions are introduced to stabilize the trimeric prefusion state of Recombinant COVID-19 S protein and abolish the furin cleavage site, respectively. | | |
| Form | Liquid in a 0.2 µm filtered solution of PBS, pH 7.4. | | |
| Gene Symbol | | | |
| Alternative Names | SARS-CoV-2 RBD Protein; SARS-CoV-2 Spike RBD Protein; SARS-CoV-2 S Protein RBD | | |
| Entrez Gene | 43740568 | | |
| SwissProt | P0DTC2 | | |
| Purity | Greater than 95% as determined by reducing SDS-PAGE. | | |
| Chemical Structure | | | |
| Quality Control | | | |
| Directions for Use | Please minimize freeze-thaw cycles. | | |
| Storage/Stability | Store it at -20°C to -80°C for one year. It is recommended that the protein be aliquoted for optimal storage. Avoid repeated freeze-thaw cycles. | | |

Application key: E- ELISA, WB- Western blot, IH- Immunohistochemistry, IF- Immunofluorescence, FC- Flow cytometry, IC- Immunocytochemistry, IP- Immunoprecipitation, ChIP- Chromatin Immunoprecipitation, EMSA- Electrophoretic Mobility Shift Assay, BL- Blocking, SE- Sandwich ELISA, CBE- Cell-based ELISA, RNAi- RNA interference

Species reactivity key: H- Human, M- Mouse, R- Rat, B- Bovine, C- Chicken, D- Dog, G- Goat, Mk- Monkey, P- Pig, Rb- Rabbit, S- Sheep, Z- Zebrafish

COHESION BIOSCIENCES LIMITED

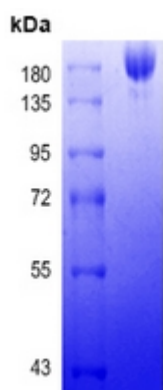
WEB
www.cohesionbio.com

ORDER
order@cohesionbio.com

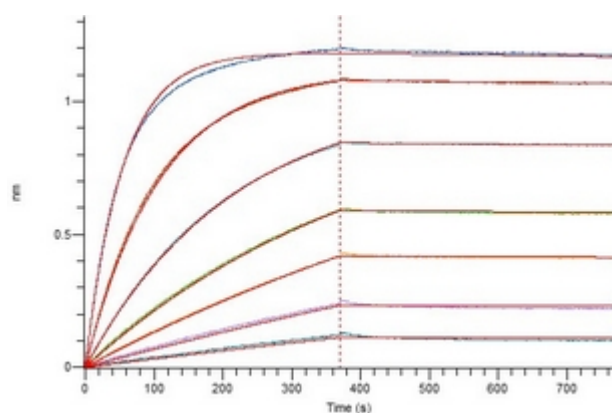
SUPPORT
techsupport@cohesionbio.com

CUSTOM
custom@cohesionbio.com

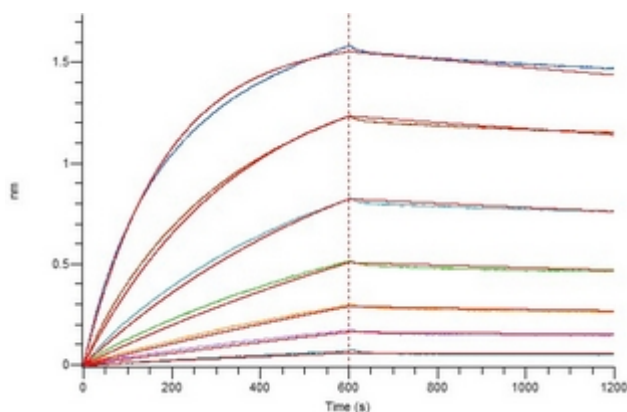
Product Data Sheet



Greater than 95% as determined by reducing SDS-PAGE.



Loaded Human ACE-2 on Protein A Biosensor, can bind Recombinant COVID-19 S-trimer Protein (Omicron, BA.2) with an affinity constant of 0.07 nM as determined in bioactivity assay.



Loaded Anti-COVID-19 S1 mAb on Protein A Biosensor, can bind Recombinant COVID-19 S-trimer Protein (Omicron, BA.2) with an affinity constant of 4.87 nM as determined in bioactivity assay.

Application key: E- ELISA, WB- Western blot, IH- Immunohistochemistry, IF- Immunofluorescence, FC- Flow cytometry, IC- Immunocytochemistry, IP- Immunoprecipitation, ChIP- Chromatin Immunoprecipitation, EMSA- Electrophoretic Mobility Shift Assay, BL- Blocking, SE- Sandwich ELISA, CBE- Cell-based ELISA, RNAi- RNA interference

Species reactivity key: H- Human, M- Mouse, R- Rat, B- Bovine, C- Chicken, D- Dog, G- Goat, Mk- Monkey, P- Pig, Rb- Rabbit, S- Sheep, Z- Zebrafish

COHESION BIOSCIENCES LIMITED

WEB
www.cohesionbio.com

ORDER
order@cohesionbio.com

SUPPORT
techsupport@cohesionbio.com

CUSTOM
custom@cohesionbio.com