

Recombinant COVID-19 S Protein RBD (Omicron, BA.2)

Catalog #	Source	Reactivity	Applications
CRP3137	Human cells	COVID-19	E, WB, SDS-PAGE, MS
Description	<p>Recombinant COVID-19 S Protein RBD (Omicron, BA.2) is produced by our mammalian expression system and the target gene encoding Arg319-Phe541 (G339D, S371F, S373P, S375F, T376A, D405N, R408S, K417N, N440K, S477N, T478K, E484A, Q493R, Q498R, N501Y, Y505H) is expressed with a mFc tag at the C-terminus. The mutations were identified in the COVID-19 variant (known as BA.2 lineage) which emerged in the United Kingdom.</p>		
Form	Liquid in a 0.2 µm filtered solution of PBS, pH 7.4.		
Gene Symbol			
Alternative Names	SARS-CoV-2 RBD Protein; SARS-CoV-2 Spike RBD Protein; SARS-CoV-2 S Protein RBD		
Entrez Gene	43740568		
SwissProt	P0DTC2		
Purity	Greater than 95% as determined by reducing SDS-PAGE.		
Chemical Structure			
Quality Control			
Directions for Use	Please minimize freeze-thaw cycles.		
Storage/Stability	Store it at -20°C to -80°C for one year. It is recommended that the protein be aliquoted for optimal storage. Avoid repeated freeze-thaw cycles.		

Application key: E- ELISA, WB- Western blot, IH- Immunohistochemistry, IF- Immunofluorescence, FC- Flow cytometry, IC- Immunocytochemistry, IP- Immunoprecipitation, ChIP- Chromatin Immunoprecipitation, EMSA- Electrophoretic Mobility Shift Assay, BL- Blocking, SE- Sandwich ELISA, CBE- Cell-based ELISA, RNAi- RNA interference

Species reactivity key: H- Human, M- Mouse, R- Rat, B- Bovine, C- Chicken, D- Dog, G- Goat, Mk- Monkey, P- Pig, Rb- Rabbit, S- Sheep, Z- Zebrafish

COHESION BIOSCIENCES LIMITED

WEB
www.cohesionbio.com

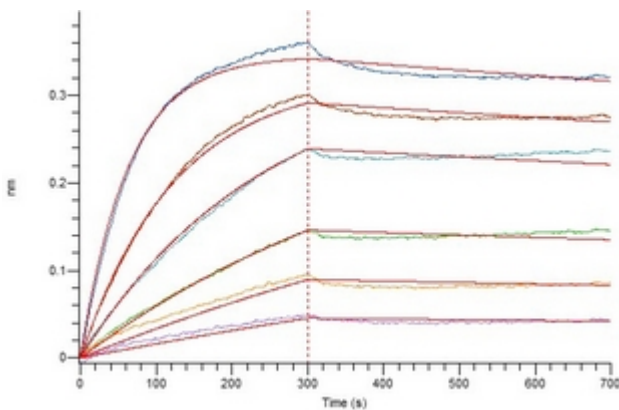
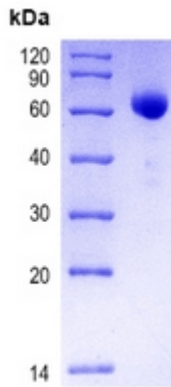
ORDER
order@cohesionbio.com

SUPPORT
techsupport@cohesionbio.com

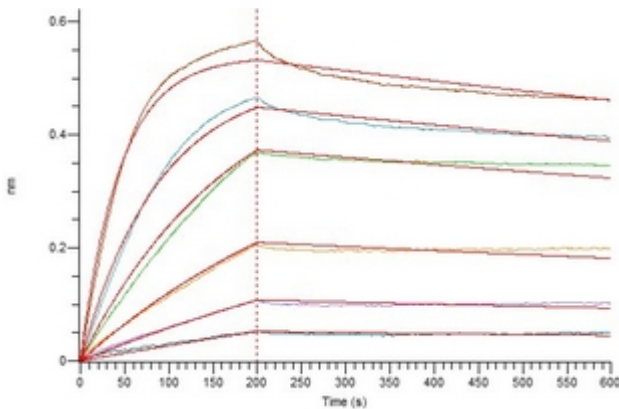
CUSTOM
custom@cohesionbio.com

Product Data Sheet

Greater than 95% as determined by reducing SDS-PAGE.



Loaded Human ACE-2 on Protein A Biosensor, can bind Recombinant COVID-19 S Protein RBD (Omicron, BA.2) with an affinity constant of 0.125 nM as determined in bioactivity assay.



Loaded Anti-COVID-19 S1 mAb on Protein A Biosensor, can bind Recombinant COVID-19 S Protein RBD (Omicron, BA.2) with an affinity constant of 0.41 nM as determined in bioactivity assay.

Application key: E- ELISA, WB- Western blot, IH- Immunohistochemistry, IF- Immunofluorescence, FC- Flow cytometry, IC- Immunocytochemistry, IP- Immunoprecipitation, ChIP- Chromatin Immunoprecipitation, EMSA- Electrophoretic Mobility Shift Assay, BL- Blocking, SE- Sandwich ELISA, CBE- Cell-based ELISA, RNAi- RNA interference

Species reactivity key: H- Human, M- Mouse, R- Rat, B- Bovine, C- Chicken, D- Dog, G- Goat, Mk- Monkey, P- Pig, Rb- Rabbit, S- Sheep, Z- Zebrafish

COHESION BIOSCIENCES LIMITED

WEB
www.cohesionbio.com

ORDER
order@cohesionbio.com

SUPPORT
techsupport@cohesionbio.com

CUSTOM
custom@cohesionbio.com