

## Prestained Protein Ladder (25-400 kDa)

Catalog #	Source	Reactivity	Applications
CRG1048			WB, Protein Electrophoresis
<b>Description</b>	Prestained Protein Ladder 25 to 400 kDa		
<b>Specificity</b>	Prestained Protein Ladder is a mixture of 7 blue-, red-, orange-, green-stained proteins (25 to 400 kDa) for use as size standards in protein electrophoresis (SDS-PAGE) and western blotting. The protein ladder is supplied in a ready-to-use format for direct loading onto gels; no need to heat, reduce, or add sample buffer prior to use.		
<b>Form</b>	Liquid in 67 mM Tris-H <sub>3</sub> PO <sub>4</sub> , 5mM EDTA, 2 % SDS, 33 % Glycerol, 0.02 % proclin300, pH7.5		
<b>Directions for Use</b>	<ol style="list-style-type: none"> <li>1. Thaw the ladder at room temperature for a few minutes to dissolve precipitated solids. Do not boil!</li> <li>2. Mix gently, but thoroughly, to ensure the solution is homogeneous.</li> <li>3. Load the following volumes of the ladder on an SDS-polyacrylamide gel: <ul style="list-style-type: none"> <li>- 5 µL per well for mini gel,</li> <li>- 10 µL per well for large gel.</li> </ul> </li> </ol> <p>Use the same volumes for Western blotting.</p> <p>The loading volumes listed above are recommended for gels with a thickness of 0.75-1.0 mm. The loading volume should be doubled for 1.5 mm thick gels.</p> <p>Notes:</p> <ol style="list-style-type: none"> <li>1. Prestained proteins can have different mobilities in various SDS-PAGE-buffer systems. However, they are suitable for approximate molecular weight determination when calibrated against unstained standards in the same system. See the table provided for migration patterns in different electrophoresis conditions. In low-percentage gels (&lt; 10 %), the low-molecular weight proteins in the ladder may migrate with the dye front.</li> </ol>		

### COHESION BIOSCIENCES LIMITED

## Product Data Sheet

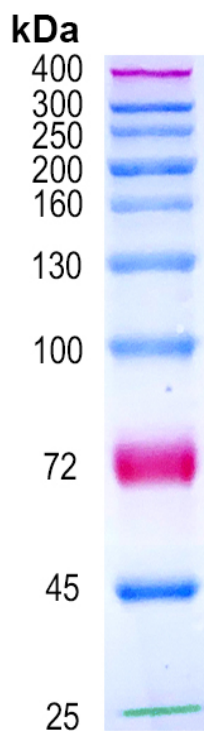
2. Prestained Protein Ladder can be used in Western blotting with all common membranes: PVDF, nylon and nitrocellulose.

3. Longer transfer times or higher transfer voltages may be required for Western blotting of large (>100 kDa) proteins.

### Storage/Stability

Shipped at 4°C. Store at -20°C for one year.

### Image



7% Trisglycine Blot

### COHESION BIOSCIENCES LIMITED