

# Product Data Sheet

## Anti-PADI2 Antibody

| Catalog #                | Source                                                                                                                        | Reactivity | Applications |
|--------------------------|-------------------------------------------------------------------------------------------------------------------------------|------------|--------------|
| CQA5374                  | Rabbit                                                                                                                        | H, M, R    | WB           |
| <b>Description</b>       | Rabbit polyclonal antibody to PADI2                                                                                           |            |              |
| <b>Immunogen</b>         | Recombinant fusion protein of human PADI2. The exact sequence is proprietary.                                                 |            |              |
| <b>Purification</b>      | The antibody was purified by immunogen affinity chromatography.                                                               |            |              |
| <b>Specificity</b>       | Recognizes endogenous levels of PADI2 protein                                                                                 |            |              |
| <b>Clonality</b>         | Polyclonal                                                                                                                    |            |              |
| <b>Conjugation</b>       |                                                                                                                               |            |              |
| <b>Form</b>              | Liquid in 0.42% Potassium phosphate, 0.87% Sodium chloride, pH 7.3, 30% glycerol, and 0.01% sodium azide.                     |            |              |
| <b>Dilution</b>          | WB (1/500 - 1/2000)                                                                                                           |            |              |
| <b>Gene Symbol</b>       | PADI2                                                                                                                         |            |              |
| <b>Alternative Names</b> | KIAA0994; PDI2; Protein-arginine deiminase type-2; PAD-H19; Peptidylarginine deiminase II; Protein-arginine deiminase type II |            |              |
| <b>Entrez Gene</b>       | 11240 (Human); 18600 (Mouse); 29511 (Rat)                                                                                     |            |              |
| <b>SwissProt</b>         | Q9Y2J8 (Human); Q08642 (Mouse); P20717 (Rat)                                                                                  |            |              |
| <b>Storage/Stability</b> | Shipped at 4°C. Upon delivery aliquot and store at -20°C for one year. Avoid freeze/thaw cycles.                              |            |              |

**Application key:** E- ELISA, WB- Western blot, IH- Immunohistochemistry, IF- Immunofluorescence, FC- Flow cytometry, IC- Immunocytochemistry, IP- Immunoprecipitation, ChIP- Chromatin Immunoprecipitation, EMSA- Electrophoretic Mobility Shift Assay, BL- Blocking, SE- Sandwich ELISA, CBE- Cell-based ELISA, RNAi- RNA interference

**Species reactivity key:** H- Human, M- Mouse, R- Rat, B- Bovine, C- Chicken, D- Dog, G- Goat, Mk- Monkey, P- Pig, Rb- Rabbit, S- Sheep, Z- Zebrafish

### COHESION BIOSCIENCES LIMITED

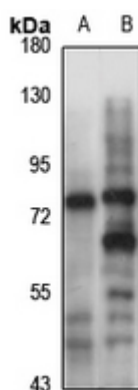
**WEB**  
www.cohesionbio.com

**ORDER**  
order@cohesionbio.com

**SUPPORT**  
techsupport@cohesionbio.com

**CUSTOM**  
custom@cohesionbio.com

## Product Data Sheet



Western blot analysis of PADI2 expression in mouse spleen (A), rat brain (B) whole cell lysates. (Predicted band size: 49; 75 kD; Observed band size: 75 kD)

**Application key:** E- ELISA, WB- Western blot, IH- Immunohistochemistry, IF- Immunofluorescence, FC- Flow cytometry, IC- Immunocytochemistry, IP- Immunoprecipitation, ChIP- Chromatin Immunoprecipitation, EMSA- Electrophoretic Mobility Shift Assay, BL- Blocking, SE- Sandwich ELISA, CBE- Cell-based ELISA, RNAi- RNA interference

**Species reactivity key:** H- Human, M- Mouse, R- Rat, B- Bovine, C- Chicken, D- Dog, G- Goat, Mk- Monkey, P- Pig, Rb- Rabbit, S- Sheep, Z- Zebrafish

**COHESION BIOSCIENCES LIMITED**

**WEB**  
[www.cohesionbio.com](http://www.cohesionbio.com)

**ORDER**  
[order@cohesionbio.com](mailto:order@cohesionbio.com)

**SUPPORT**  
[techsupport@cohesionbio.com](mailto:techsupport@cohesionbio.com)

**CUSTOM**  
[custom@cohesionbio.com](mailto:custom@cohesionbio.com)