

# Product Data Sheet

## Anti-EIF2B Antibody

| Catalog #                | Source                                                                                                                   | Reactivity | Applications      |
|--------------------------|--------------------------------------------------------------------------------------------------------------------------|------------|-------------------|
| CQA4349                  | Rabbit                                                                                                                   | H, M, R    | WB, IH, IF/IC, IP |
| <b>Description</b>       | Rabbit polyclonal antibody to EIF2B                                                                                      |            |                   |
| <b>Immunogen</b>         | Recombinant fusion protein of human EIF2B. The exact sequence is proprietary.                                            |            |                   |
| <b>Purification</b>      | The antibody was purified by immunogen affinity chromatography.                                                          |            |                   |
| <b>Specificity</b>       | Recognizes endogenous levels of EIF2B protein                                                                            |            |                   |
| <b>Clonality</b>         | Polyclonal                                                                                                               |            |                   |
| <b>Conjugation</b>       |                                                                                                                          |            |                   |
| <b>Form</b>              | Liquid in 0.42% Potassium phosphate, 0.87% Sodium chloride, pH 7.3, 30% glycerol, and 0.01% sodium azide.                |            |                   |
| <b>Dilution</b>          | WB (1/500 - 1/2000), IH (1/50 - 1/200), IF/IC (1/50 - 1/200), IP (1/20 - 1/50)                                           |            |                   |
| <b>Gene Symbol</b>       | EIF2B2                                                                                                                   |            |                   |
| <b>Alternative Names</b> | EIF2BB; Translation initiation factor eIF-2B subunit beta; S20I15; S20III15; eIF-2B GDP-GTP exchange factor subunit beta |            |                   |
| <b>Entrez Gene</b>       | 8892 (Human); 217715 (Mouse)                                                                                             |            |                   |
| <b>SwissProt</b>         | P49770 (Human); Q99LD9 (Mouse); Q62818 (Rat)                                                                             |            |                   |
| <b>Storage/Stability</b> | Shipped at 4°C. Upon delivery aliquot and store at -20°C for one year. Avoid freeze/thaw cycles.                         |            |                   |

**Application key:** E- ELISA, WB- Western blot, IH- Immunohistochemistry, IF- Immunofluorescence, FC- Flow cytometry, IC- Immunocytochemistry, IP- Immunoprecipitation, ChIP- Chromatin Immunoprecipitation, EMSA- Electrophoretic Mobility Shift Assay, BL- Blocking, SE- Sandwich ELISA, CBE- Cell-based ELISA, RNAi- RNA interference

**Species reactivity key:** H- Human, M- Mouse, R- Rat, B- Bovine, C- Chicken, D- Dog, G- Goat, Mk- Monkey, P- Pig, Rb- Rabbit, S- Sheep, Z- Zebrafish

### COHESION BIOSCIENCES LIMITED

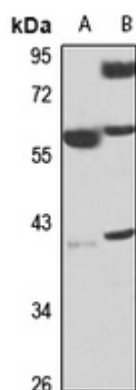
**WEB**  
www.cohesionbio.com

**ORDER**  
order@cohesionbio.com

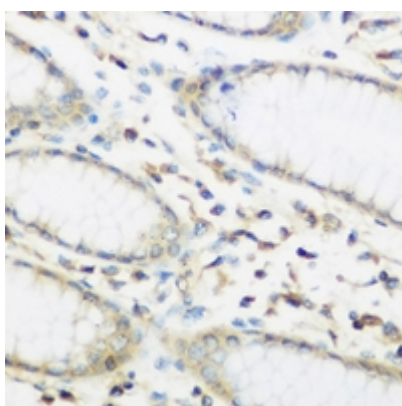
**SUPPORT**  
techsupport@cohesionbio.com

**CUSTOM**  
custom@cohesionbio.com

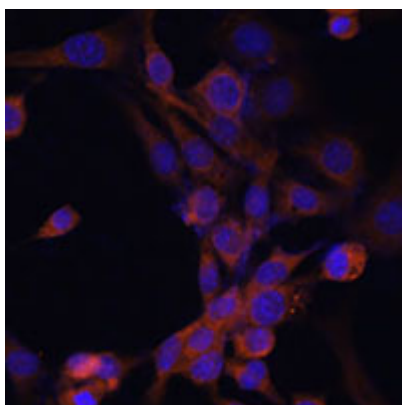
# Product Data Sheet



Western blot analysis of EIF2B expression in mouse thymus (A), rat kidney (B) whole cell lysates. (Predicted band size: 38 kD; Observed band size: 39 kD)



Immunohistochemical analysis of EIF2B staining in human stomach formalin fixed paraffin embedded tissue section. The section was pre-treated using heat mediated antigen retrieval with sodium citrate buffer (pH 6.0). The section was then incubated with the antibody at room temperature and detected using an HRP conjugated compact polymer system. DAB was used as the chromogen. The section was then counterstained with haematoxylin and mounted with DPX.



Immunofluorescent analysis of EIF2B staining in NIH3T3 cells. Formalin-fixed cells were permeabilized with 0.1% Triton X-100 in TBS for 5-10 minutes and blocked with 3% BSA-PBS for 30 minutes at room temperature. Cells were probed with the primary antibody in 3% BSA-PBS and incubated overnight at 4 °C in a humidified chamber. Cells were washed with PBST and incubated with a AF594-conjugated secondary antibody (red) in PBS at room temperature in the dark. DAPI was used to stain the cell nuclei (blue).

**Application key:** E- ELISA, WB- Western blot, IH- Immunohistochemistry, IF- Immunofluorescence, FC- Flow cytometry, IC- Immunocytochemistry, IP- Immunoprecipitation, ChIP- Chromatin Immunoprecipitation, EMSA- Electrophoretic Mobility Shift Assay, BL- Blocking, SE- Sandwich ELISA, CBE- Cell-based ELISA, RNAi- RNA interference

**Species reactivity key:** H- Human, M- Mouse, R- Rat, B- Bovine, C- Chicken, D- Dog, G- Goat, Mk- Monkey, P- Pig, Rb- Rabbit, S- Sheep, Z- Zebrafish

**COHESION BIOSCIENCES LIMITED**

**WEB**  
[www.cohesionbio.com](http://www.cohesionbio.com)

**ORDER**  
[order@cohesionbio.com](mailto:order@cohesionbio.com)

**SUPPORT**  
[techsupport@cohesionbio.com](mailto:techsupport@cohesionbio.com)

**CUSTOM**  
[custom@cohesionbio.com](mailto:custom@cohesionbio.com)