

# Product Data Sheet

## Anti-RAB3D Antibody

| Catalog #                | Source  | Reactivity | Applications |
|--------------------------|---|------------|--------------|
| CQA2482                  | Rabbit  | H, M, R    | WB           |
| <b>Description</b>       | Rabbit polyclonal antibody to RAB3D   |            |              |
| <b>Immunogen</b>         | Recombinant full length protein of human RAB3D  |            |              |
| <b>Purification</b>      | The antibody was purified by immunogen affinity chromatography.   |            |              |
| <b>Specificity</b>       | Recognizes endogenous levels of RAB3D protein.  |            |              |
| <b>Clonality</b>         | Polyclonal  |            |              |
| <b>Conjugation</b>       |   |            |              |
| <b>Form</b>              | Liquid in 0.42% Potassium phosphate, 0.87% Sodium chloride, pH 7.3, 30% glycerol, and 0.01% sodium azide. |            |              |
| <b>Dilution</b>          | WB (1/500 - 1/2000)   |            |              |
| <b>Gene Symbol</b>       | RAB3D   |            |              |
| <b>Alternative Names</b> | GOV; RAB16; Ras-related protein Rab-3D  |            |              |
| <b>Entrez Gene</b>       | 9545 (Human); 19340 (Mouse); 140665 (Rat)   |            |              |
| <b>SwissProt</b>         | O95716 (Human); P35276 (Mouse); Q63942 (Rat)  |            |              |
| <b>Storage/Stability</b> | Shipped at 4° C. Upon delivery aliquot and store at -20° C for one year. Avoid freeze/thaw cycles.        |            |              |

**Application key:** E- ELISA, WB- Western blot, IH- Immunohistochemistry, IF- Immunofluorescence, FC- Flow cytometry, IC- Immunocytochemistry, IP- Immunoprecipitation, ChIP- Chromatin Immunoprecipitation, EMSA- Electrophoretic Mobility Shift Assay, BL- Blocking, SE- Sandwich ELISA, CBE- Cell-based ELISA, RNAi- RNA interference

**Species reactivity key:** H- Human, M- Mouse, R- Rat, B- Bovine, C- Chicken, D- Dog, G- Goat, Mk- Monkey, P- Pig, Rb- Rabbit, S- Sheep, Z- Zebrafish

### COHESION BIOSCIENCES LIMITED

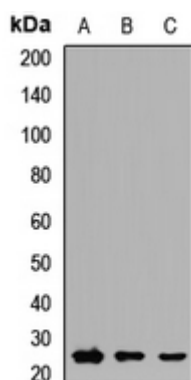
**WEB**  
[www.cohesionbio.com](http://www.cohesionbio.com)

**ORDER**  
[order@cohesionbio.com](mailto:order@cohesionbio.com)

**SUPPORT**  
[techsupport@cohesionbio.com](mailto:techsupport@cohesionbio.com)

**CUSTOM**  
[custom@cohesionbio.com](mailto:custom@cohesionbio.com)

## Product Data Sheet



Western blot analysis of RAB3D expression in HepG2 (A), MCF7 (B), mouse lung (C) whole cell lysates. (Predicted band size: 24 kD; Observed band size: 26 kD)

**Application key:** E- ELISA, WB- Western blot, IH- Immunohistochemistry, IF- Immunofluorescence, FC- Flow cytometry, IC- Immunocytochemistry, IP- Immunoprecipitation, ChIP- Chromatin Immunoprecipitation, EMSA- Electrophoretic Mobility Shift Assay, BL- Blocking, SE- Sandwich ELISA, CBE- Cell-based ELISA, RNAi- RNA interference

**Species reactivity key:** H- Human, M- Mouse, R- Rat, B- Bovine, C- Chicken, D- Dog, G- Goat, Mk- Monkey, P- Pig, Rb- Rabbit, S- Sheep, Z- Zebrafish

**COHESION BIOSCIENCES LIMITED**

**WEB**  
[www.cohesionbio.com](http://www.cohesionbio.com)

**ORDER**  
[order@cohesionbio.com](mailto:order@cohesionbio.com)

**SUPPORT**  
[techsupport@cohesionbio.com](mailto:techsupport@cohesionbio.com)

**CUSTOM**  
[custom@cohesionbio.com](mailto:custom@cohesionbio.com)