

Product Data Sheet

Anti-AP2-beta-1 Antibody

Catalog #	Source	Reactivity	Applications
CQA1105	Rabbit	H, M, R	WB
Description	Rabbit polyclonal antibody to AP2-beta-1		
Immunogen	Recombinant full length protein of human AP2-beta-1		
Purification	The antibody was purified by immunogen affinity chromatography.		
Specificity	Recognizes endogenous levels of AP2-beta-1 protein.		
Clonality	Polyclonal		
Conjugation			
Form	Liquid in 0.42% Potassium phosphate, 0.87% Sodium chloride, pH 7.3, 30% glycerol, and 0.01% sodium azide.		
Dilution	WB (1/500 - 1/2000)		
Gene Symbol	AP2B1		
Alternative Names	ADTB2; CLAPB1; AP-2 complex subunit beta; AP105B; Adapter-related protein complex 2 subunit beta; Adaptor protein complex AP-2 subunit beta; Beta-2-adaptin; Beta-adaptin; Clathrin assembly protein complex 2 beta large chain; Plasma membrane adaptor HA2/AP		
Entrez Gene	163 (Human); 71770 (Mouse); 100912146, 140670 (Rat)		
SwissProt	P63010 (Human); Q9DBG3 (Mouse); P62944 (Rat)		
Storage/Stability	Shipped at 4°C. Upon delivery aliquot and store at -20°C for one year. Avoid freeze/thaw cycles.		

Application key: E- ELISA, WB- Western blot, IH- Immunohistochemistry, IF- Immunofluorescence, FC- Flow cytometry, IC- Immunocytochemistry, IP- Immunoprecipitation, ChIP- Chromatin Immunoprecipitation, EMSA- Electrophoretic Mobility Shift Assay, BL- Blocking, SE- Sandwich ELISA, CBE- Cell-based ELISA, RNAi- RNA interference

Species reactivity key: H- Human, M- Mouse, R- Rat, B- Bovine, C- Chicken, D- Dog, G- Goat, Mk- Monkey, P- Pig, Rb- Rabbit, S- Sheep, Z- Zebrafish

COHESION BIOSCIENCES LIMITED

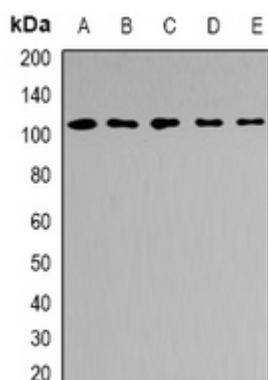
WEB
www.cohesionbio.com

ORDER
order@cohesionbio.com

SUPPORT
techsupport@cohesionbio.com

CUSTOM
custom@cohesionbio.com

Product Data Sheet



Western blot analysis of AP2-beta-1 expression in A549 (A), K562 (B), Hela (C), mouse brain (D), mouse testis (E) whole cell lysates. (Predicted band size: 104 kD; Observed band size: 105 kD)

Application key: E- ELISA, WB- Western blot, IH- Immunohistochemistry, IF- Immunofluorescence, FC- Flow cytometry, IC- Immunocytochemistry, IP- Immunoprecipitation, ChIP- Chromatin Immunoprecipitation, EMSA- Electrophoretic Mobility Shift Assay, BL- Blocking, SE- Sandwich ELISA, CBE- Cell-based ELISA, RNAi- RNA interference

Species reactivity key: H- Human, M- Mouse, R- Rat, B- Bovine, C- Chicken, D- Dog, G- Goat, Mk- Monkey, P- Pig, Rb- Rabbit, S- Sheep, Z- Zebrafish

COHESION BIOSCIENCES LIMITED

WEB
www.cohesionbio.com

ORDER
order@cohesionbio.com

SUPPORT
techsupport@cohesionbio.com

CUSTOM
custom@cohesionbio.com