

Anti-Beta-actin Antibody-HRP labeled

Catalog #	Source	Reactivity	Applications
CPA9121	Mouse	H, M, R, Mk, C, P, Rb, Z	WB
Description	Mouse monoclonal antibody to Beta-actin-HRP labeled		
Immunogen	KLH-conjugated synthetic peptide encompassing a sequence of human Beta-actin-HRP labeled. The exact sequence is proprietary.		
Purification			
Specificity	Recognizes endogenous levels of Beta-actin protein.		
Clonality	Monoclonal		
Conjugation	HRP		
Form	Liquid in 0.42% Potassium phosphate, 0.87% Sodium chloride, pH 7.3, 30% glycerol, and 0.01% sodium azide.		
Dilution	WB (1/10000 - 1/200000)		
Gene Symbol	ACTB		
Alternative Names	Actin cytoplasmic 1; Beta-actin		
Entrez Gene	60 (Human); 11461 (Mouse); 81822 (Rat)		
SwissProt	P60709 (Human); P60710 (Mouse); P60711 (Rat)		
Storage/Stability	Shipped at 4°C. Upon delivery aliquot and store at -20°C for one year. Avoid freeze/thaw cycles.		

Application key: E- ELISA, WB- Western blot, IH- Immunohistochemistry, IF- Immunofluorescence, FC- Flow cytometry, IC- Immunocytochemistry, IP- Immunoprecipitation, CHIP- Chromatin Immunoprecipitation, EMSA- Electrophoretic Mobility Shift Assay, BL- Blocking, SE- Sandwich ELISA, CBE- Cell-based ELISA, RNAi- RNA interference

Species reactivity key: H- Human, M- Mouse, R- Rat, B- Bovine, C- Chicken, D- Dog, G- Goat, Mk- Monkey, P- Pig, Rb- Rabbit, S- Sheep, Z- Zebrafish

COHESION BIOSCIENCES LIMITED

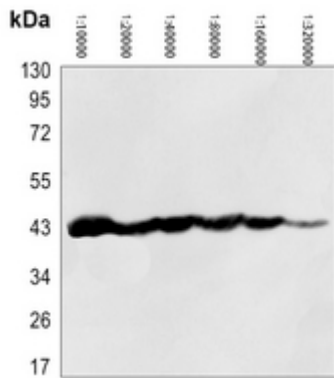
WEB
www.cohesionbio.com

ORDER
order@cohesionbio.com

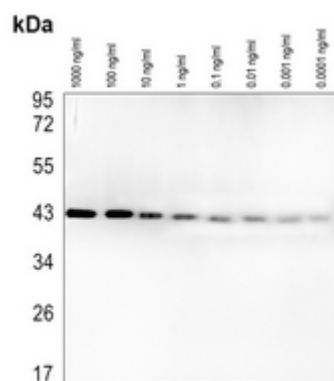
SUPPORT
techsupport@cohesionbio.com

CUSTOM
custom@cohesionbio.com

Product Data Sheet



Western blot analysis of Beta-actin Antibody-HRP labeled expression in HEK293T whole cell lysates using different dilutions from 1:10000 to 1:320000. (Predicted band size: 41 kD; Observed band size: 42 kD)



Western blot analysis of Beta-actin Antibody-HRP labeled using different Recombinant Human ACTB Protein concentration from 1000 ng/ml to 0.0001 ng/ml. (Predicted band size: 41 kD; Observed band size: 42 kD)

Application key: E- ELISA, WB- Western blot, IH- Immunohistochemistry, IF- Immunofluorescence, FC- Flow cytometry, IC- Immunocytochemistry, IP- Immunoprecipitation, CHIP- Chromatin Immunoprecipitation, EMSA- Electrophoretic Mobility Shift Assay, BL- Blocking, SE- Sandwich ELISA, CBE- Cell-based ELISA, RNAi- RNA interference

Species reactivity key: H- Human, M- Mouse, R- Rat, B- Bovine, C- Chicken, D- Dog, G- Goat, Mk- Monkey, P- Pig, Rb- Rabbit, S- Sheep, Z- Zebrafish

COHESION BIOSCIENCES LIMITED

WEB

www.cohesionbio.com

ORDER

order@cohesionbio.com

SUPPORT

techsupport@cohesionbio.com

CUSTOM

custom@cohesionbio.com