

Product Data Sheet

Anti-Alpha-actin-1 Antibody

Catalog #	Source	Reactivity	Applications
CPA9103	Mouse	H, M, R	WB, IH, IP
Description	Mouse monoclonal antibody to Alpha-actin-1		
Immunogen	KLH-conjugated synthetic peptide encompassing a sequence of human Alpha-actin-1. The exact sequence is proprietary.		
Purification			
Specificity	Recognizes endogenous levels of Alpha-actin-1 protein.		
Clonality	Monoclonal		
Conjugation			
Form	Liquid in 0.42% Potassium phosphate, 0.87% Sodium chloride, pH 7.3, 30% glycerol, and 0.01% sodium azide.		
Dilution	WB (1/5000 - 1/10000), IH (1/200 - 1/500), IP (1/100 - 1/200)		
Gene Symbol	ACTA1		
Alternative Names	ACTA; Actin alpha skeletal muscle; Alpha-actin-1		
Entrez Gene	58 (Human); 11459 (Mouse); 29437 (Rat)		
SwissProt	P68133 (Human); P68134 (Mouse); P68136 (Rat)		
Storage/Stability	Shipped at 4°C. Upon delivery aliquot and store at -20°C for one year. Avoid freeze/thaw cycles.		

Application key: E- ELISA, WB- Western blot, IH- Immunohistochemistry, IF- Immunofluorescence, FC- Flow cytometry, IC- Immunocytochemistry, IP- Immunoprecipitation, ChIP- Chromatin Immunoprecipitation, EMSA- Electrophoretic Mobility Shift Assay, BL- Blocking, SE- Sandwich ELISA, CBE- Cell-based ELISA, RNAi- RNA interference

Species reactivity key: H- Human, M- Mouse, R- Rat, B- Bovine, C- Chicken, D- Dog, G- Goat, Mk- Monkey, P- Pig, Rb- Rabbit, S- Sheep, Z- Zebrafish

COHESION BIOSCIENCES LIMITED

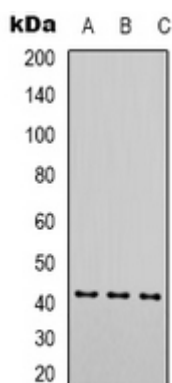
WEB
www.cohesionbio.com

ORDER
order@cohesionbio.com

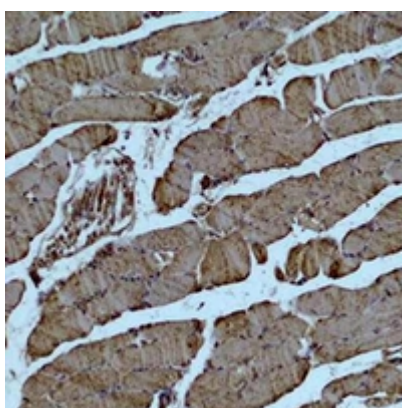
SUPPORT
techsupport@cohesionbio.com

CUSTOM
custom@cohesionbio.com

Product Data Sheet



Western blot analysis of Alpha-actin-1 expression in Hela (A), mouse brain (B), rat brain (C) whole cell lysates. (Predicted band size: 42 kD; Observed band size: 42 kD)



Immunohistochemical analysis of Alpha-actin-1 staining in mouse skeletal muscle formalin fixed paraffin embedded tissue section. The section was pre-treated using heat mediated antigen retrieval with sodium citrate buffer (pH 6.0). The section was then incubated with the antibody at room temperature and detected using an HRP conjugated compact polymer system. DAB was used as the chromogen. The section was then counterstained with haematoxylin and mounted with DPX.



Immunoprecipitation of Alpha-actin-1 from 0.5mg mouse brain whole cell extract lysate, using Anti-Alpha-actin-1 Antibody.

Application key: E- ELISA, WB- Western blot, IH- Immunohistochemistry, IF- Immunofluorescence, FC- Flow cytometry, IC- Immunocytochemistry, IP- Immunoprecipitation, ChIP- Chromatin Immunoprecipitation, EMSA- Electrophoretic Mobility Shift Assay, BL- Blocking, SE- Sandwich ELISA, CBE- Cell-based ELISA, RNAi- RNA interference

Species reactivity key: H- Human, M- Mouse, R- Rat, B- Bovine, C- Chicken, D- Dog, G- Goat, Mk- Monkey, P- Pig, Rb- Rabbit, S- Sheep, Z- Zebrafish

COHESION BIOSCIENCES LIMITED

WEB
www.cohesionbio.com

ORDER
order@cohesionbio.com

SUPPORT
techsupport@cohesionbio.com

CUSTOM
custom@cohesionbio.com