

Product Data Sheet

Anti-Thymopoietin Antibody

Catalog #	Source	Reactivity	Applications
CPA7513	Rabbit	H, M, R, B	WB
Description	Rabbit polyclonal antibody to Thymopoietin		
Immunogen	KLH-conjugated synthetic peptide encompassing a sequence within the N-term region of human Thymopoietin. The exact sequence is proprietary.		
Purification	The antibody was purified by immunogen affinity chromatography.		
Specificity	Recognizes endogenous levels of Thymopoietin protein.		
Clonality	Polyclonal		
Conjugation			
Form	Liquid in 0.42% Potassium phosphate, 0.87% Sodium chloride, pH 7.3, 30% glycerol, and 0.01% sodium azide.		
Dilution	WB (1/500 - 1/2000)		
Gene Symbol	TMPO		
Alternative Names	TMPO; LAP2; Lamina-associated polypeptide 2, isoform alpha; Thymopoietin isoform alpha; TP alpha; Thymopoietin-related peptide isoform alpha; TPRP isoform alpha; TMPO; LAP2; Lamina-associated polypeptide 2, isoforms beta/gamma; Thymopoietin, isoforms beta		
Entrez Gene	7112 (Human); 21917 (Mouse); 25359 (Rat)		
SwissProt	P42166, P42167 (Human); Q61033, Q61029 (Mouse); Q62733 (Rat)		
Storage/Stability	Shipped at 4°C. Upon delivery aliquot and store at -20°C for one year. Avoid freeze/thaw cycles.		

Application key: E- ELISA, WB- Western blot, IH- Immunohistochemistry, IF- Immunofluorescence, FC- Flow cytometry, IC- Immunocytochemistry, IP- Immunoprecipitation, ChIP- Chromatin Immunoprecipitation, EMSA- Electrophoretic Mobility Shift Assay, BL- Blocking, SE- Sandwich ELISA, CBE- Cell-based ELISA, RNAi- RNA interference

Species reactivity key: H- Human, M- Mouse, R- Rat, B- Bovine, C- Chicken, D- Dog, G- Goat, Mk- Monkey, P- Pig, Rb- Rabbit, S- Sheep, Z- Zebrafish

COHESION BIOSCIENCES LIMITED

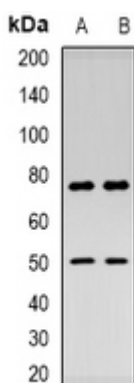
WEB
www.cohesionbio.com

ORDER
order@cohesionbio.com

SUPPORT
techsupport@cohesionbio.com

CUSTOM
custom@cohesionbio.com

Product Data Sheet



Western blot analysis of Thymopoietin expression in HepG2 (A), mouse kidney (B) whole cell lysates. (Predicted band size: 75; 50 kD; Observed band size: 75; 50 kD)

Application key: E- ELISA, WB- Western blot, IH- Immunohistochemistry, IF- Immunofluorescence, FC- Flow cytometry, IC- Immunocytochemistry, IP- Immunoprecipitation, ChIP- Chromatin Immunoprecipitation, EMSA- Electrophoretic Mobility Shift Assay, BL- Blocking, SE- Sandwich ELISA, CBE- Cell-based ELISA, RNAi- RNA interference

Species reactivity key: H- Human, M- Mouse, R- Rat, B- Bovine, C- Chicken, D- Dog, G- Goat, Mk- Monkey, P- Pig, Rb- Rabbit, S- Sheep, Z- Zebrafish

COHESION BIOSCIENCES LIMITED

WEB
www.cohesionbio.com

ORDER
order@cohesionbio.com

SUPPORT
techsupport@cohesionbio.com

CUSTOM
custom@cohesionbio.com