

Anti-SPFH1 Antibody

Catalog #	Source	Reactivity	Applications
CPA7512	Rabbit	H, M, R, B, Z	WB, IH
Description	Rabbit polyclonal antibody to SPFH1		
Immunogen	KLH-conjugated synthetic peptide encompassing a sequence within the center region of human SPFH1. The exact sequence is proprietary.		
Purification	The antibody was purified by immunogen affinity chromatography.		
Specificity	Recognizes endogenous levels of SPFH1 protein.		
Clonality	Polyclonal		
Conjugation			
Form	Liquid in 0.42% Potassium phosphate, 0.87% Sodium chloride, pH 7.3, 30% glycerol, and 0.01% sodium azide.		
Dilution	WB (1/500 - 1/2000), IH (1/50 - 1/200)		
Gene Symbol	ERLIN1; ERLIN2		
Alternative Names	ERLIN1; C10orf69; KE04; KEO4; SPFH1; Erlin-1; Endoplasmic reticulum lipid raft-associated protein 1; Protein KE04; Stomatin-prohibitin-flotillin-HflC/K domain-containing protein 1; SPFH domain-containing protein 1; ERLIN2; C8orf2; SPFH2; Erlin-2; Endoplasmic reticulum lipid raft-associated protein 2; Stomatin-prohibitin-flotillin-HflC/K domain-containing protein 2; SPFH domain-containing protein 2		
Entrez Gene	10613, 11160 (Human); 226144, 244373 (Mouse); 290823 (Rat)		
SwissProt	O75477, O94905 (Human); Q91X78, Q8BFZ9 (Mouse); B5DEH2 (Rat)		
Storage/Stability	Shipped at 4°C. Upon delivery aliquot and store at -20°C for one year. Avoid freeze/thaw cycles.		

Application key: E- ELISA, WB- Western blot, IH- Immunohistochemistry, IF- Immunofluorescence, FC- Flow cytometry, IC- Immunocytochemistry, IP- Immunoprecipitation, ChIP- Chromatin Immunoprecipitation, EMSA- Electrophoretic Mobility Shift Assay, BL- Blocking, SE- Sandwich ELISA, CBE- Cell-based ELISA, RNAi- RNA interference

Species reactivity key: H- Human, M- Mouse, R- Rat, B- Bovine, C- Chicken, D- Dog, G- Goat, Mk- Monkey, P- Pig, Rb- Rabbit, S- Sheep, Z- Zebrafish

COHESION BIOSCIENCES LIMITED

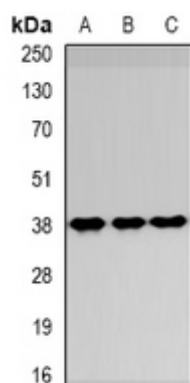
WEB
www.cohesionbio.com

ORDER
order@cohesionbio.com

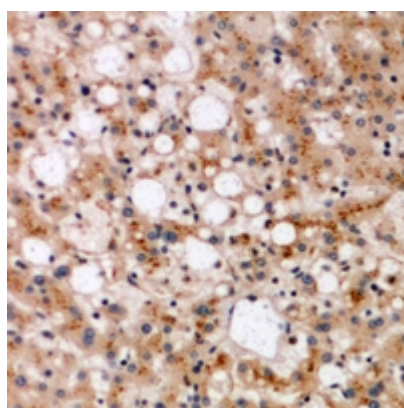
SUPPORT
techsupport@cohesionbio.com

CUSTOM
custom@cohesionbio.com

Product Data Sheet



Western blot analysis of SPFH1 expression in HepG2 (A), NIH3T3 (B), HeLa (C) whole cell lysates. (Predicted band size: 39; 37 kD; Observed band size: 38 kD)



Immunohistochemical analysis of SPFH1 staining in human liver formalin fixed paraffin embedded tissue section. The section was pre-treated using heat mediated antigen retrieval with sodium citrate buffer (pH 6.0). The section was then incubated with the antibody at room temperature and detected using an HRP conjugated compact polymer system. DAB was used as the chromogen. The section was then counterstained with haematoxylin and mounted with DPX.

Application key: E- ELISA, WB- Western blot, IH- Immunohistochemistry, IF- Immunofluorescence, FC- Flow cytometry, IC- Immunocytochemistry, IP- Immunoprecipitation, ChIP- Chromatin Immunoprecipitation, EMSA- Electrophoretic Mobility Shift Assay, BL- Blocking, SE- Sandwich ELISA, CBE- Cell-based ELISA, RNAi- RNA interference

Species reactivity key: H- Human, M- Mouse, R- Rat, B- Bovine, C- Chicken, D- Dog, G- Goat, Mk- Monkey, P- Pig, Rb- Rabbit, S- Sheep, Z- Zebrafish

COHESION BIOSCIENCES LIMITED

WEB
www.cohesionbio.com

ORDER
order@cohesionbio.com

SUPPORT
techsupport@cohesionbio.com

CUSTOM
custom@cohesionbio.com