

Product Data Sheet

Anti-TLE1/2/3/4 Antibody

Catalog #	Source	Reactivity	Applications
CPA7458	Rabbit	H, M, R, Z	WB
Description	Rabbit polyclonal antibody to TLE1/2/3/4		
Immunogen	KLH-conjugated synthetic peptide encompassing a sequence within the C-term region of human TLE1/2/3/4. The exact sequence is proprietary.		
Purification	The antibody was purified by immunogen affinity chromatography.		
Specificity	Recognizes endogenous levels of TLE1/2/3/4 protein.		
Clonality	Polyclonal		
Conjugation			
Form	Liquid in 0.42% Potassium phosphate, 0.87% Sodium chloride, pH 7.3, 30% glycerol, and 0.01% sodium azide.		
Dilution	WB (1/500 - 1/2000)		
Gene Symbol	TLE1; TLE2; TLE3; TLE4		
Alternative Names	TLE1; Transducin-like enhancer protein 1; E(Sp1) homolog; Enhancer of split groucho-like protein 1; ESG1; TLE2; Transducin-like enhancer protein 2; Enhancer of split groucho-like protein 2; ESG2; TLE3; KIAA1547; Transducin-like enhancer protein 3; Enhance		
Entrez Gene	7088, 7089, 7090, 7091 (Human); 21885, 21886, 21887, 21888 (Mouse); 84424, 25565 (Rat)		
SwissProt	Q04724, Q04725, Q04726, Q04727 (Human); Q62440, Q9WVB2, Q08122, Q62441 (Mouse); Q9JIT3, Q07141 (Rat)		
Storage/Stability	Shipped at 4°C. Upon delivery aliquot and store at -20°C for one year. Avoid freeze/thaw cycles.		

Application key: E- ELISA, WB- Western blot, IH- Immunohistochemistry, IF- Immunofluorescence, FC- Flow cytometry, IC- Immunocytochemistry, IP- Immunoprecipitation, ChIP- Chromatin Immunoprecipitation, EMSA- Electrophoretic Mobility Shift Assay, BL- Blocking, SE- Sandwich ELISA, CBE- Cell-based ELISA, RNAi- RNA interference

Species reactivity key: H- Human, M- Mouse, R- Rat, B- Bovine, C- Chicken, D- Dog, G- Goat, Mk- Monkey, P- Pig, Rb- Rabbit, S- Sheep, Z- Zebrafish

COHESION BIOSCIENCES LIMITED

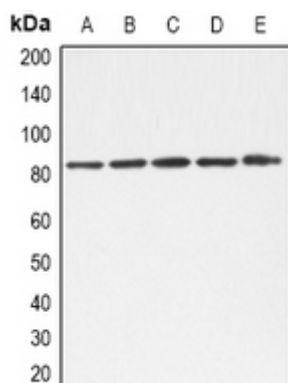
WEB
www.cohesionbio.com

ORDER
order@cohesionbio.com

SUPPORT
techsupport@cohesionbio.com

CUSTOM
custom@cohesionbio.com

Product Data Sheet



Western blot analysis of TLE1/2/3/4 expression in A549 (A), K562 (B), Hela (C), NIH3T3 (D), mouse liver (E) whole cell lysates. (Predicted band size: 83; 79 kD; Observed band size: 82 kD)

Application key: E- ELISA, WB- Western blot, IH- Immunohistochemistry, IF- Immunofluorescence, FC- Flow cytometry, IC- Immunocytochemistry, IP- Immunoprecipitation, ChIP- Chromatin Immunoprecipitation, EMSA- Electrophoretic Mobility Shift Assay, BL- Blocking, SE- Sandwich ELISA, CBE- Cell-based ELISA, RNAi- RNA interference

Species reactivity key: H- Human, M- Mouse, R- Rat, B- Bovine, C- Chicken, D- Dog, G- Goat, Mk- Monkey, P- Pig, Rb- Rabbit, S- Sheep, Z- Zebrafish

COHESION BIOSCIENCES LIMITED

WEB
www.cohesionbio.com

ORDER
order@cohesionbio.com

SUPPORT
techsupport@cohesionbio.com

CUSTOM
custom@cohesionbio.com