

## Product Data Sheet

## Anti-FGF18 Antibody

Catalog #	Source	Reactivity	Applications
CPA7279	Rabbit	H, M, R, B	WB
<b>Description</b>	Rabbit polyclonal antibody to FGF18		
<b>Immunogen</b>	KLH-conjugated synthetic peptide encompassing a sequence within the C-term region of human FGF18. The exact sequence is proprietary.		
<b>Purification</b>	The antibody was purified by immunogen affinity chromatography.		
<b>Specificity</b>	Recognizes endogenous levels of FGF18 protein.		
<b>Clonality</b>	Polyclonal		
<b>Conjugation</b>			
<b>Form</b>	Liquid in 0.42% Potassium phosphate, 0.87% Sodium chloride, pH 7.3, 30% glycerol, and 0.01% sodium azide.		
<b>Dilution</b>	WB (1/500 - 1/1000)		
<b>Gene Symbol</b>	FGF18		
<b>Alternative Names</b>	Fibroblast growth factor 18; FGF-18; zFGF5		
<b>Entrez Gene</b>	8817 (Human); 14172 (Mouse); 29369 (Rat)		
<b>SwissProt</b>	O76093 (Human); O89101 (Mouse); O88182 (Rat)		
<b>Storage/Stability</b>	Shipped at 4°C. Upon delivery aliquot and store at -20°C for one year. Avoid freeze/thaw cycles.		

**Application key:** E- ELISA, WB- Western blot, IH- Immunohistochemistry, IF- Immunofluorescence, FC- Flow cytometry, IC- Immunocytochemistry, IP- Immunoprecipitation, ChIP- Chromatin Immunoprecipitation, EMSA- Electrophoretic Mobility Shift Assay, BL- Blocking, SE- Sandwich ELISA, CBE- Cell-based ELISA, RNAi- RNA interference

**Species reactivity key:** H- Human, M- Mouse, R- Rat, B- Bovine, C- Chicken, D- Dog, G- Goat, Mk- Monkey, P- Pig, Rb- Rabbit, S- Sheep, Z- Zebrafish

## COHESION BIOSCIENCES LIMITED

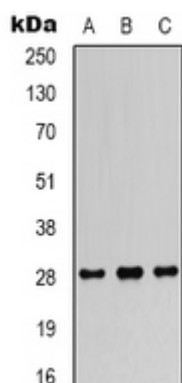
WEB  
[www.cohesionbio.com](http://www.cohesionbio.com)

ORDER  
[order@cohesionbio.com](mailto:order@cohesionbio.com)

SUPPORT  
[techsupport@cohesionbio.com](mailto:techsupport@cohesionbio.com)

CUSTOM  
[custom@cohesionbio.com](mailto:custom@cohesionbio.com)

## Product Data Sheet



Western blot analysis of FGF18 expression in SW480 (A), SKOV3 (B), mouse heart (C) whole cell lysates. (Predicted band size: 23 kD; Observed band size: 28 kD)

**Application key:** E- ELISA, WB- Western blot, IH- Immunohistochemistry, IF- Immunofluorescence, FC- Flow cytometry, IC- Immunocytochemistry, IP- Immunoprecipitation, ChIP- Chromatin Immunoprecipitation, EMSA- Electrophoretic Mobility Shift Assay, BL- Blocking, SE- Sandwich ELISA, CBE- Cell-based ELISA, RNAi- RNA interference

**Species reactivity key:** H- Human, M- Mouse, R- Rat, B- Bovine, C- Chicken, D- Dog, G- Goat, Mk- Monkey, P- Pig, Rb- Rabbit, S- Sheep, Z- Zebrafish

**COHESION BIOSCIENCES LIMITED**

**WEB**  
[www.cohesionbio.com](http://www.cohesionbio.com)

**ORDER**  
[order@cohesionbio.com](mailto:order@cohesionbio.com)

**SUPPORT**  
[techsupport@cohesionbio.com](mailto:techsupport@cohesionbio.com)

**CUSTOM**  
[custom@cohesionbio.com](mailto:custom@cohesionbio.com)