

Anti-Actin-pan (Acetyl-K52/50/51) Antibody

Catalog #	Source	Reactivity	Applications
CPA6223	Rabbit	H, M, R, B, C	WB
Description	Rabbit polyclonal antibody to Actin-pan (Acetyl-K52/50/51)		
Immunogen	KLH-conjugated synthetic acetylated peptide corresponding to residues surrounding K52/50/51 of human Actin-pan protein. The exact sequence is proprietary.		
Purification	The antibody was purified by immunogen affinity chromatography.		
Specificity	Recognizes endogenous levels of Actin-pan protein only when acetylated at K52/50/51.		
Clonality	Polyclonal		
Conjugation			
Form	Liquid in 0.42% Potassium phosphate, 0.87% Sodium chloride, pH 7.3, 30% glycerol, and 0.01% sodium azide.		
Dilution	WB (1/500 - 1/1000)		
Gene Symbol	ACTA2; ACTB; ACTC1; ACTG1; ACTG2; ACTA1		
Alternative Names	ACTA2; ACTSA; ACTVS; GIG46; Actin aortic smooth muscle; Alpha-actin-2; Cell growth-inhibiting gene 46 protein; ACTB; Actin cytoplasmic 1; Beta-actin; ACTC1; ACTC; Actin alpha cardiac muscle 1; Alpha-cardiac actin; ACTG1; ACTB; ACTG; Actin cytoplasmic 2; G		
Entrez Gene	59, 60, 70, 71, 72, 58 (Human); 11475, 11461, 11464, 11465 (Mouse); 81633, 81822, 29275, 100361457 (Rat)		
SwissProt	P62736, P60709, P68032, P63261, P63267, P68133 (Human); P62737, P60710, P68033, P63260 (Mouse); P62738, P60711, P68035, P63259 (Rat)		
Storage/Stability	Shipped at 4°C. Upon delivery aliquot and store at -20°C for one year. Avoid		
Application key: E- ELISA, WB- Western blot, IH- Immunohistochemistry, IF- Immunofluorescence, FC- Flow cytometry, IC- Immunocytochemistry, IP- Immunoprecipitation, ChIP- Chromatin Immunoprecipitation, EMSA- Electrophoretic Mobility Shift Assay, BL- Blocking, SE- Sandwich ELISA, CBE- Cell-based ELISA, RNAi- RNA interference			
Species reactivity key: H- Human, M- Mouse, R- Rat, B- Bovine, C- Chicken, D- Dog, G- Goat, Mk- Monkey, P- Pig, Rb- Rabbit, S- Sheep, Z- Zebrafish			

COHESION BIOSCIENCES LIMITED

WEB
www.cohesionbio.com

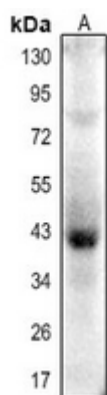
ORDER
order@cohesionbio.com

SUPPORT
techsupport@cohesionbio.com

CUSTOM
custom@cohesionbio.com

Product Data Sheet

freeze/thaw cycles.



Western blot analysis of Actin-pan (Acetyl-K52/50/51) expression in mouse muscle (A) whole cell lysates. (Predicted band size: 41; 42 kD; Observed band size: 42 kD)

Application key: E- ELISA, WB- Western blot, IH- Immunohistochemistry, IF- Immunofluorescence, FC- Flow cytometry, IC- Immunocytochemistry, IP- Immunoprecipitation, ChIP- Chromatin Immunoprecipitation, EMSA- Electrophoretic Mobility Shift Assay, BL- Blocking, SE- Sandwich ELISA, CBE- Cell-based ELISA, RNAi- RNA interference

Species reactivity key: H- Human, M- Mouse, R- Rat, B- Bovine, C- Chicken, D- Dog, G- Goat, Mk- Monkey, P- Pig, Rb- Rabbit, S- Sheep, Z- Zebrafish

COHESION BIOSCIENCES LIMITED

WEB
www.cohesionbio.com

ORDER
order@cohesionbio.com

SUPPORT
techsupport@cohesionbio.com

CUSTOM
custom@cohesionbio.com