

# Product Data Sheet

## Anti-Cytochrome P450 11B1/2 Antibody

| Catalog #                | Source  | Reactivity | Applications |
|--------------------------|---|------------|--------------|
| CPA5663                  | Rabbit  | H, M, R    | WB           |
| <b>Description</b>       | Rabbit polyclonal antibody to Cytochrome P450 11B1/2  |            |              |
| <b>Immunogen</b>         | KLH-conjugated synthetic peptide encompassing a sequence within the C-term region of human Cytochrome P450 11B1/2. The exact sequence is proprietary.   |            |              |
| <b>Purification</b>      | The antibody was purified by immunogen affinity chromatography.   |            |              |
| <b>Specificity</b>       | Recognizes endogenous levels of Cytochrome P450 11B1/2 protein.   |            |              |
| <b>Clonality</b>         | Polyclonal  |            |              |
| <b>Conjugation</b>       |   |            |              |
| <b>Form</b>              | Liquid in 0.42% Potassium phosphate, 0.87% Sodium chloride, pH 7.3, 30% glycerol, and 0.01% sodium azide.   |            |              |
| <b>Dilution</b>          | WB (1/500 - 1/1000)   |            |              |
| <b>Gene Symbol</b>       | CYP11B1; CYP11B2  |            |              |
| <b>Alternative Names</b> | CYP11B1; S11BH; Cytochrome P450 11B1 mitochondrial; CYPXIB1; Cytochrome P-450c11; Cytochrome P450C11; Steroid 11-beta-hydroxylase; CYP11B2; Cytochrome P450 11B2 mitochondrial; Aldosterone synthase; ALDOS; Aldosterone-synthesizing enzyme; CYPXIB2; Cytochro |            |              |
| <b>Entrez Gene</b>       | 1584, 1585 (Human)  |            |              |
| <b>SwissProt</b>         | P15538, P19099 (Human)  |            |              |
| <b>Storage/Stability</b> | Shipped at 4°C. Upon delivery aliquot and store at -20°C for one year. Avoid freeze/thaw cycles.  |            |              |

**Application key:** E- ELISA, WB- Western blot, IH- Immunohistochemistry, IF- Immunofluorescence, FC- Flow cytometry, IC- Immunocytochemistry, IP- Immunoprecipitation, ChIP- Chromatin Immunoprecipitation, EMSA- Electrophoretic Mobility Shift Assay, BL- Blocking, SE- Sandwich ELISA, CBE- Cell-based ELISA, RNAi- RNA interference

**Species reactivity key:** H- Human, M- Mouse, R- Rat, B- Bovine, C- Chicken, D- Dog, G- Goat, Mk- Monkey, P- Pig, Rb- Rabbit, S- Sheep, Z- Zebrafish

### COHESION BIOSCIENCES LIMITED

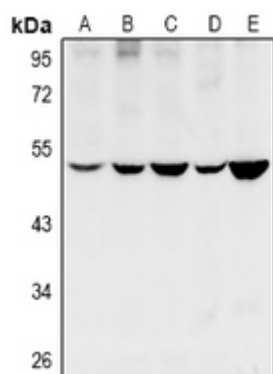
**WEB**  
www.cohesionbio.com

**ORDER**  
order@cohesionbio.com

**SUPPORT**  
techsupport@cohesionbio.com

**CUSTOM**  
custom@cohesionbio.com

## Product Data Sheet



Western blot analysis of Cytochrome P450 11B1/2 expression in HEK293T (A), LO2 (B), SGC7901 (C), PC12 (D), CT26 (E) whole cell lysates. (Predicted band size: 57 kD; Observed band size: 48 kD)

**Application key:** E- ELISA, WB- Western blot, IH- Immunohistochemistry, IF- Immunofluorescence, FC- Flow cytometry, IC- Immunocytochemistry, IP- Immunoprecipitation, ChIP- Chromatin Immunoprecipitation, EMSA- Electrophoretic Mobility Shift Assay, BL- Blocking, SE- Sandwich ELISA, CBE- Cell-based ELISA, RNAi- RNA interference

**Species reactivity key:** H- Human, M- Mouse, R- Rat, B- Bovine, C- Chicken, D- Dog, G- Goat, Mk- Monkey, P- Pig, Rb- Rabbit, S- Sheep, Z- Zebrafish

**COHESION BIOSCIENCES LIMITED**

**WEB**  
[www.cohesionbio.com](http://www.cohesionbio.com)

**ORDER**  
[order@cohesionbio.com](mailto:order@cohesionbio.com)

**SUPPORT**  
[techsupport@cohesionbio.com](mailto:techsupport@cohesionbio.com)

**CUSTOM**  
[custom@cohesionbio.com](mailto:custom@cohesionbio.com)