

## Recombinant Anti-RAC1/2/3 Rabbit mAb

| Catalog #                | Source  | Reactivity | Applications |
|--------------------------|---|------------|--------------|
| CMA4748                  | Rabbit  | H, M, R    | WB           |
| <b>Description</b>       | Recombinant rabbit monoclonal antibody to RAC1/2/3  |            |              |
| <b>Immunogen</b>         | KLH-conjugated synthetic peptide encompassing a sequence of human RAC1. The exact sequence is proprietary.  |            |              |
| <b>Purification</b>      | The antibody was purified by immunogen affinity chromatography.   |            |              |
| <b>Specificity</b>       | Recognizes endogenous levels of RAC1/2/3 protein  |            |              |
| <b>Clonality</b>         | Polyclonal  |            |              |
| <b>Conjugation</b>       |   |            |              |
| <b>Form</b>              | Liquid in PBS containing 50% glycerol, 0.2% BSA and 0.01% sodium azide.   |            |              |
| <b>Dilution</b>          | WB (1/500 - 1/1000)   |            |              |
| <b>Gene Symbol</b>       | RAC1; RAC2; RAC3  |            |              |
| <b>Alternative Names</b> | RAC1; TC25; MIG5; Ras-related C3 botulinum toxin substrate 1; Cell migration-inducing gene 5 protein; Ras-like protein TC25; p21-Rac1; RAC2; Ras-related C3 botulinum toxin substrate 2; GX; Small G protein; p21-Rac2; RAC3; Ras-related C3 botulinum toxin su |            |              |
| <b>Entrez Gene</b>       | 5879, 5880, 5881, 998 (Human); 19353, 19354, 170758, 12540 (Mouse); 363875, 64465 (Rat)   |            |              |
| <b>SwissProt</b>         | P63000, P15153, P60763 (Human); P63001, Q05144, P60764, P60766 (Mouse); Q6RUV5, Q8CFN2 (Rat)  |            |              |
| <b>Storage/Stability</b> | Shipped at 4°C. Upon delivery aliquot and store at -20°C for one year. Avoid freeze/thaw cycles.  |            |              |

**Application key:** E- ELISA, WB- Western blot, IH- Immunohistochemistry, IF- Immunofluorescence, FC- Flow cytometry, IC- Immunocytochemistry, IP- Immunoprecipitation, ChIP- Chromatin Immunoprecipitation, EMSA- Electrophoretic Mobility Shift Assay, BL- Blocking, SE- Sandwich ELISA, CBE- Cell-based ELISA, RNAi- RNA interference

**Species reactivity key:** H- Human, M- Mouse, R- Rat, B- Bovine, C- Chicken, D- Dog, G- Goat, Mk- Monkey, P- Pig, Rb- Rabbit, S- Sheep, Z- Zebrafish

### COHESION BIOSCIENCES LIMITED

**WEB**

[www.cohesionbio.com](http://www.cohesionbio.com)

**ORDER**

[order@cohesionbio.com](mailto:order@cohesionbio.com)

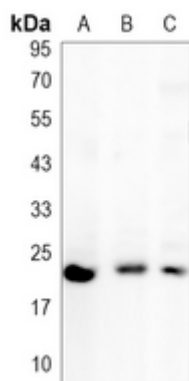
**SUPPORT**

[techsupport@cohesionbio.com](mailto:techsupport@cohesionbio.com)

**CUSTOM**

[custom@cohesionbio.com](mailto:custom@cohesionbio.com)

## Product Data Sheet



Western blot analysis of RAC1/2/3 expression in HeLa (A), mouse kidney (B), rat kidney (C) whole cell lysates. (Predicted band size: 21 kD; Observed band size: 21 kD)

**Application key:** E- ELISA, WB- Western blot, IH- Immunohistochemistry, IF- Immunofluorescence, FC- Flow cytometry, IC- Immunocytochemistry, IP- Immunoprecipitation, ChIP- Chromatin Immunoprecipitation, EMSA- Electrophoretic Mobility Shift Assay, BL- Blocking, SE- Sandwich ELISA, CBE- Cell-based ELISA, RNAi- RNA interference

**Species reactivity key:** H- Human, M- Mouse, R- Rat, B- Bovine, C- Chicken, D- Dog, G- Goat, Mk- Monkey, P- Pig, Rb- Rabbit, S- Sheep, Z- Zebrafish

### COHESION BIOSCIENCES LIMITED

**WEB**

[www.cohesionbio.com](http://www.cohesionbio.com)

**ORDER**

[order@cohesionbio.com](mailto:order@cohesionbio.com)

**SUPPORT**

[techsupport@cohesionbio.com](mailto:techsupport@cohesionbio.com)

**CUSTOM**

[custom@cohesionbio.com](mailto:custom@cohesionbio.com)