

Product Data Sheet

Recombinant Anti-EBP1 Rabbit mAb

Catalog #	Source	Reactivity	Applications
CMA4613	Rabbit	H, M, R	WB
Description	Recombinant rabbit monoclonal antibody to EBP1		
Immunogen	KLH-conjugated synthetic peptide encompassing a sequence within human EBP1 protein. The exact sequence is proprietary.		
Purification	The antibody was purified by immunogen affinity chromatography.		
Specificity	Recognizes endogenous levels of EBP1 protein		
Clonality	Monoclonal		
Conjugation			
Form	Liquid in PBS containing 50% glycerol, 0.2% BSA and 0.01% sodium azide.		
Dilution	WB (1/500 - 1/1000)		
Gene Symbol	PA2G4		
Alternative Names	EBP1; Proliferation-associated protein 2G4; Cell cycle protein p38-2G4 homolog; hG4-1; ErbB3-binding protein 1		
Entrez Gene	5036 (Human); 18813 (Mouse)		
SwissProt	Q9UQ80 (Human); P50580 (Mouse)		
Storage/Stability	Shipped at 4° C. Upon delivery aliquot and store at -20° C for one year. Avoid freeze/thaw cycles.		

Application key: E- ELISA, WB- Western blot, IH- Immunohistochemistry, IF- Immunofluorescence, FC- Flow cytometry, IC- Immunocytochemistry, IP- Immunoprecipitation, ChIP- Chromatin Immunoprecipitation, EMSA- Electrophoretic Mobility Shift Assay, BL- Blocking, SE- Sandwich ELISA, CBE- Cell-based ELISA, RNAi- RNA interference

Species reactivity key: H- Human, M- Mouse, R- Rat, B- Bovine, C- Chicken, D- Dog, G- Goat, Mk- Monkey, P- Pig, Rb- Rabbit, S- Sheep, Z- Zebrafish

COHESION BIOSCIENCES LIMITED

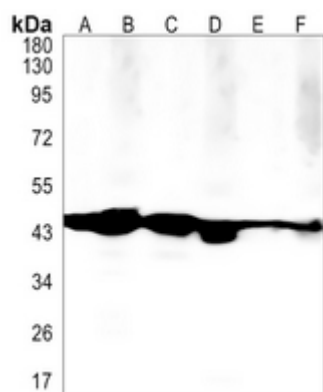
WEB
www.cohesionbio.com

ORDER
order@cohesionbio.com

SUPPORT
techsupport@cohesionbio.com

CUSTOM
custom@cohesionbio.com

Product Data Sheet



Western blot analysis of EBP1 expression in K562 (A), MCF7 (B), mouse kidney (C), mouse muscle (D), rat kidney (E), rat muscle (F) whole cell lysates. (Predicted band size: 43 kD; Observed band size: 48 kD)

Application key: E- ELISA, WB- Western blot, IH- Immunohistochemistry, IF- Immunofluorescence, FC- Flow cytometry, IC- Immunocytochemistry, IP- Immunoprecipitation, ChIP- Chromatin Immunoprecipitation, EMSA- Electrophoretic Mobility Shift Assay, BL- Blocking, SE- Sandwich ELISA, CBE- Cell-based ELISA, RNAi- RNA interference

Species reactivity key: H- Human, M- Mouse, R- Rat, B- Bovine, C- Chicken, D- Dog, G- Goat, Mk- Monkey, P- Pig, Rb- Rabbit, S- Sheep, Z- Zebrafish

COHESION BIOSCIENCES LIMITED

WEB
www.cohesionbio.com

ORDER
order@cohesionbio.com

SUPPORT
techsupport@cohesionbio.com

CUSTOM
custom@cohesionbio.com