



Human REG3 alpha ELISA Kit

User Manual

Catalog # CEK2228

(Version 1.1A)

Sandwich Enzyme-Linked Immunosorbent Assay for Quantitative
Detection of Human REG3 alpha Concentrations in Cell culture
supernates, Serum, Plasma.

For research use only. Not for diagnostic or therapeutic procedures.

I. INTRODUCTION.....	2
II. ASSAY PRINCIPLES.....	3
III. KIT COMPONENTS.....	4
IV. STORAGE AND STABILITY.....	4
V. MATERIALS REQUIRED BUT NOT PROVIDED.....	5
VI. HEALTH AND SAFETY PRECAUTIONS.....	5
VII. REAGENT PREPARATION.....	6
VIII. ASSAY PROCEDURE.....	9
IX. ASSAY PROCEDURE SUMMARY.....	11
X. TYPICAL DATA.....	12
XI. SENSITIVITY.....	12
XII. SPECIFICITY.....	12
XIII. CROSS REACTIVITY.....	13
XIV. REFERENCES.....	13
XV. TROUBLESHOOTING GUIDE.....	14
XVI. TECHNICAL SUPPORT.....	15
XVII. NOTES.....	15

I. INTRODUCTION

Regenerating islet-derived protein 3 alpha (or Regenerating islet-derived protein III-alpha) formerly known as HIP/PAP (Hepatocarcinoma-Intestine-Pancreas/Pancreatitis-Associated Protein) and peptide 23 is a protein that in humans is encoded by the REG3A gene. This gene is mapped to 2p12. It encodes a pancreatic secretory protein that may be involved in cell proliferation or differentiation. It has similarity to the C-type lectin superfamily. The enhanced expression of this gene is observed during pancreatic inflammation and liver carcinogenesis. The mature protein also functions as an antimicrobial protein with antibacterial activity. Alternate splicing results in multiple transcript variants that encode the same protein.

II. ASSAY PRINCIPLES

The Cohesion Bioscience Human REG3 alpha ELISA (Enzyme-Linked Immunosorbent Assay) kit is an in vitro enzyme-linked immunosorbent assay for the quantitative measurement of Human REG3 alpha in Cell culture supernates, Serum, Plasma. This assay employs an antibody specific for Human REG3 alpha coated on a 96-well plate. Standards and samples are pipetted into the wells and REG3 alpha present in a sample is bound to the wells by the immobilized antibody. The wells are washed and biotinylated anti-Human REG3 alpha antibody is added. After washing away unbound biotinylated antibody, HRP-conjugated streptavidin is pipetted to the wells. The wells are again washed, a TMB substrate solution is added to the wells and color develops in proportion to the amount of REG3 alpha bound. The Stop Solution changes the color from blue to yellow, and the intensity of the color is measured at 450 nm.

III. KIT COMPONENTS

Component	Volume
96-well Plate Coated With Anti-Human REG3 alpha Antibody	8 wells x 12 Strips
Human REG3 alpha Standard	50 ng x 2
Biotin-Labeled Detection Antibody (100X)	120 µl
Streptavidin-HRP (100X)	120 µl
Standard/Sample Diluent	30 ml
Detection Antibody Diluent	12 ml
Streptavidin-HRP Diluent	12 ml
Wash Buffer (20X)	30 ml
TMB Substrate Solution	12 ml
Stop Solution	12 ml
Plate Adhesive Strips	3 Strips
Technical Manual	1 Manual

IV. STORAGE AND STABILITY

All kit components are stable at 2 to 8 °C. Standard (recombinant protein) should be stored at -20 °C or -80 °C (recommended at -80 °C) after reconstitution. Opened Microplate Wells or reagents may be store for up to 1 month at 2 to 8 °C. Return unused wells to the pouch containing desiccant pack, reseal along entire edge.

Note: the kit can be used within one year if the whole kit is stored at -20 °C. Avoid repeated freeze-thaw cycles.

V. MATERIALS REQUIRED BUT NOT PROVIDED

1. Microplate reader capable of measuring absorbance at 450 nm.
2. Adjustable pipettes and pipette tips to deliver 2 µl to 1 ml volumes.
3. Adjustable 1-25 ml pipettes for reagent preparation.
4. 100 ml and 1 liter graduated cylinders.
5. Absorbent paper.
6. Distilled or deionized water.
7. Computer and software for ELISA data analysis.
8. Tubes to prepare standard or sample dilutions.

VI. HEALTH AND SAFETY PRECAUTIONS

1. Reagents provided in this kit may be harmful if ingested, inhaled or absorbed through the skin. Please carefully review the MSDS for each reagent before conducting the experiment.
2. Stop Solution contains 2 N Sulfuric Acid (H_2SO_4) and is an extremely corrosive agent. Please wear proper eye, hand and face protection when handling this material. When the experiment is finished, be sure to rinse the plate with copious amounts of running water to dilute the Stop Solution prior to disposing the plate.

VII. REAGENT PREPARATION

1. Sample Preparation

Store samples to be assayed within 24 hours at 2-8°C. For long-term storage, aliquot and freeze samples at -20°C. Avoid repeated freeze-thaw cycles.

Cell culture supernates: Remove particulates by centrifugation, assay immediately or aliquot and store samples at -20°C.

Serum: Allow the serum to clot in a serum separator tube (about 4 hours) at room temperature. Centrifuge at approximately 1000 X g for 15 minutes. Analyze the serum immediately or aliquot and store samples at -20°C.

Plasma: Collect plasma using heparin or EDTA as an anticoagulant. Centrifuge for 15 minutes at 1500 X g within 30 minutes of collection. Assay immediately or aliquot and store samples at -20°C.

Cell Lysates: Collect cells and rinse cells with PBS. Homogenize and lyse cells thoroughly in lysate solution. Centrifuge cell lysates at approximately 10000 X g for 5 minutes to remove debris. Aliquots of the cell lysates were removed and assayed.

Bone Tissue: Extract demineralized bone samples in 4 M Guanidine-HCl and protease inhibitors. Dissolve the final sample in 2 M Guanidine-HCl.

Tissue Homogenates: The preparation of tissue homogenates will vary depending upon tissue type. Rinse tissue with 1X PBS to remove excess blood, homogenized in 20 mL of 1X PBS and stored overnight at $\leq -20^{\circ}\text{C}$. After two freeze-thaw cycles were performed to break the cell membranes, the homogenates were centrifuged for 5 minutes at 5000 x g. The supernate was removed immediately and assayed.

Alternatively, aliquot and store samples at $\leq -20^{\circ}\text{C}$.

Note: Some lysis buffer, such as RIPA can not be used. Some components will affect the binding.

Urine: Urinary samples should be cleared by centrifugation and then can be used directly without dilution. Storage at -20°C.

2. Human REG3 alpha Standard Preparation

Reconstitute the lyophilized Human REG3 alpha Standard by adding 1 ml of Standard/Sample Diluent to make the 50000 pg/ml standard stock solution. Allow solution to sit at room temperature for 5 minutes, then gently vortex to mix completely. Use within one hour of reconstituting. Two tubes of the standard (50 ng per tube) are included in each kit. Use one tube for each experiment.

Perform 2-fold serial dilutions of the top standards to make the standard curve within the range of this assay (780 pg/ml - 50000 pg/ml) as below. Standard/Sample Dilution Buffer serves as the zero standard (0 pg/ml).

Standard	Add	Into
50000 pg/ml		
25000 pg/ml	500 µl of the Standard (50000 pg/ml)	500 µl of the Standard/Sample Diluent
12500 pg/ml	500 µl of the Standard (25000 pg/ml)	500 µl of the Standard/Sample Diluent
6250 pg/ml	500 µl of the Standard (12500 pg/ml)	500 µl of the Standard/Sample Diluent
3120 pg/ml	500 µl of the Standard (6250 pg/ml)	500 µl of the Standard/Sample Diluent
1560 pg/ml	500 µl of the Standard (3120 pg/ml)	500 µl of the Standard/Sample Diluent
780 pg/ml	500 µl of the Standard (1560 pg/ml)	500 µl of the Standard/Sample Diluent
0 pg/ml	1 ml of the Standard/Sample Diluent	

Note: The standard solutions are best used within 2 hours. The 50000 pg/ml standard solution should be stored at 4°C for up to 12 hours, or at -20°C for up to 48 hours. Avoid repeated freeze-thaw cycles.

3. Biotin-Labeled Detection Antibody Working Solution Preparation

The Biotin-Labeled Detection Antibody should be diluted in 1:100 with the Detection Antibody Diluent and mixed thoroughly. The solution should be prepared no more than 2 hours prior to the experiment.

4. Streptavidin-HRP Working Solution Preparation

The Streptavidin-HRP should be diluted in 1:100 with the Streptavidin-HRP Diluent and mixed thoroughly. The solution should be prepared no more than 1 hour prior to the experiment.

5. Wash Buffer Working Solution Preparation

Pour entire contents (30 ml) of the Wash Buffer Concentrate into a clean 1,000 ml graduated cylinder. Bring final volume to 600 ml with glass-distilled or deionized water (1:20).

VIII. ASSAY PROCEDURE

The Streptavidin-HRP Working Solution and TMB Substrate Solution must be kept warm at 37°C for 30 minutes before use. When diluting samples and reagents, they must be mixed completely and evenly. Standard detection curve should be prepared for each experiment. The user will decide sample dilution fold by crude estimation of protein amount in samples.

1. Add 100 µl of each standard and sample into appropriate wells.
2. Cover well and incubate for 90 minutes at room temperature or over night at 4°C with gentle shaking.
3. Remove the cover, discard the solution and wash plate 3 times with Wash Buffer Working Solution, and each time let Wash Buffer Working Solution stay in the wells for 1 - 2 minutes. Blot the plate onto paper towels or other absorbent material. Do NOT let the wells completely dry at any time.
4. Add 100 µl of Biotin-Labeled Detection Antibody Working Solution into each well and incubate the plate at 37°C for 60 minutes.
5. Wash plate 3 times with Wash Buffer Working Solution, and each time let Wash Buffer Working Solution stay in the wells for 1 - 2 minutes. Discard the Wash Buffer Working Solution and blot the plate onto paper towels or other absorbent material.
6. Add 100 µl of Streptavidin-HRP Working Solution into each well and incubate the plate at 37°C for 45 minutes.
7. Wash plate 5 times with Wash Buffer Working Solution, and each time let wash buffer stay in the wells for 1 - 2 minutes. Discard the wash buffer and blot the plate onto paper towels or other absorbent material.
8. Add 100 µl of TMB Substrate Solution into each well and incubate plate at 37°C in dark for 10-20 minutes.
9. Add 100 µl of Stop Solution into each well. The color changes into yellow immediately.

10. Read the O.D. absorbance at 450nm in a microplate reader within 30 minutes after adding the Stop Solution.

For calculation, (the relative O.D.450) = (the O.D.450 of each well) - (the O.D.450 of Zero well). The standard curve can be plotted as the relative O.D.450 of each standard solution (Y) vs. the respective concentration of the standard solution (X). The concentration of the samples can be interpolated from the standard curve.

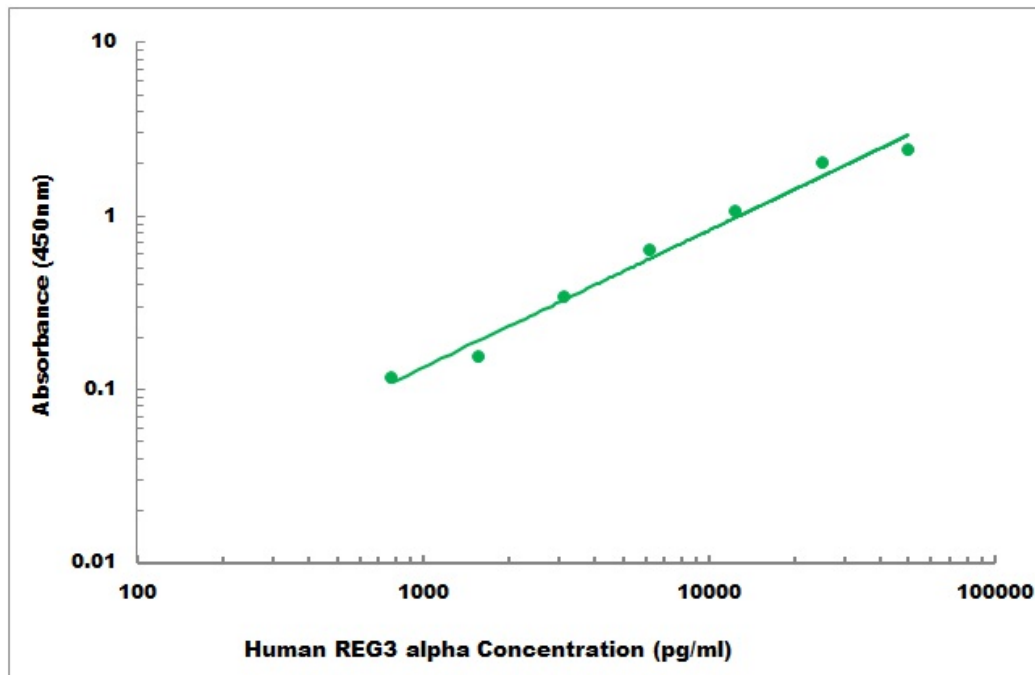
Note: If the samples measured were diluted, multiply the dilution factor to the concentrations from interpolation to obtain the concentration before dilution.

IX. ASSAY PROCEDURE SUMMARY



X. TYPICAL DATA

The standard curve is for demonstration only. A standard curve must be run with each assay.



XI. SENSITIVITY

The minimum detectable dose of Human REG3 alpha is typically less than 400 pg/ml.

XII. SPECIFICITY

The Human REG3 alpha ELISA Kit allows for the detection and quantification of endogenous levels of natural and/or recombinant Human REG3 alpha proteins within the range of 780 pg/ml - 50000 pg/ml.

XIII. CROSS REACTIVITY

No detectable cross-reactivity with other relevant proteins.

XIV. REFERENCES

XV. TROUBLESHOOTING GUIDE

Problem	Possible Cause	Solution
High signal and background in all wells	• Insufficient washing	• Increase number of washes • Increase time of soaking between in wash
	• Too much Streptavidin-HRP	• Check dilution, titration
	• Incubation time too long	• Reduce incubation time
	• Development time too long	• Decrease the incubation time before the stop solution is added
No signal	• Reagent added in incorrect order, or incorrectly prepared	• Review protocol
	• Standard has gone bad (If there is a signal in the sample wells)	• Check the condition of stored standard
	• Assay was conducted from an incorrect starting point	• Reagents allows to come to 20 - 30 °C before performing assay
Too much signal-whole plate turned uniformly blue	• Insufficient washing-unbound Streptavidin-HRP remaining	• Increase number of washes Carefully
	• Too much Streptavidin-HRP	• Check dilution
	• Plate sealer or reservoir reused, resulting in presence of residual Streptavidin-HRP	• Use fresh plate sealer and reagent reservoir for each step
Standard curve achieved but poor discrimination between point	• Plate not developed long enough	• Increase substrate solution incubation time
	• Improper calculation of standard curve dilution	• Check dilution, make new standard curve
No signal when a signal is expected, but standard curve looks fine	• Sample matrix is masking detection	• More diluted sample Recommended
Samples are reading too high, but standard curve is fine	• Samples contain protein levels above assay range	• Dilute samples and run Again
Edge effect	• Uneven temperature around work surface	• Avoid incubating plate in areas where environmental conditions vary • Use plate sealer

XVI. TECHNICAL SUPPORT

For troubleshooting, information or assistance, please go online to www.cohesionbio.com or contact us at techsupport@cohesionbio.com

COHESION BIOSCIENCES LIMITED

FLAT32 ADVENTURES COURT

12 NEWPORT AVENUE

LONDON, E14 2DN, UK

Website: www.cohesionbio.com

Email: order@cohesionbio.com

techsupport@cohesionbio.com

custom@cohesionbio.com

XVII. NOTES