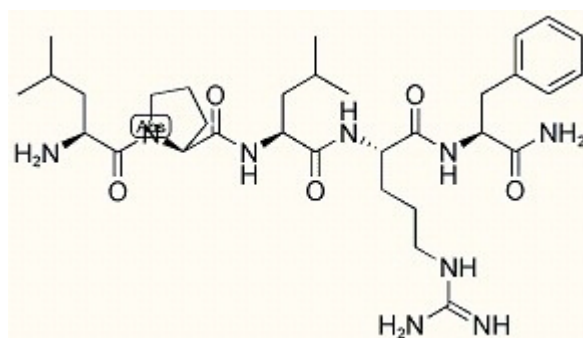


## RF-amide (Chicken)

Catalog #	Source	Reactivity	Applications
CCP2854	Synthetic		
Description		Peptide to RF-amide (Chicken)	
Form		Lyophilized powder	
CAS Number			
Molecular Formula		C32H53N9O5	
Molecular Weight		643.84	
Purity		> 95%	
Chemical Structure		Leu - Pro - Leu - Arg - Phe - NH2	
Storage/Stability		Shipped at 4°C. Store at -20°C for one year.	
Structure			



**Application key:** E- ELISA, WB- Western blot, IH- Immunohistochemistry, IF- Immunofluorescence, FC- Flow cytometry, IC- Immunocytochemistry, IP- Immunoprecipitation, ChIP- Chromatin Immunoprecipitation, EMSA- Electrophoretic Mobility Shift Assay, SE- Sandwich ELISA, CBE- Cell-based ELISA, RNAi- RNA interference

**Species reactivity key:** H- Human, M- Mouse, R- Rat, B- Bovine, C- Chicken, D- Dog, Mk- Monkey, P- Pig, Rb- Rabbit, S- Sheep, Z- Zebrafish

### COHESION BIOSCIENCES LIMITED

**WEB**  
[www.cohesionbio.com](http://www.cohesionbio.com)

**ORDER**  
[order@cohesionbio.com](mailto:order@cohesionbio.com)

**SUPPORT**  
[techsupport@cohesionbio.com](mailto:techsupport@cohesionbio.com)

**CUSTOM**  
[custom@cohesionbio.com](mailto:custom@cohesionbio.com)