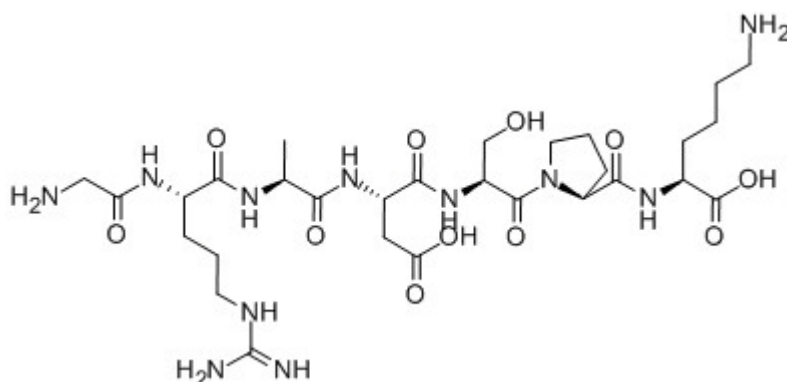


Fibronectin Analog

| Catalog # | Source | Reactivity | Applications |
|---------------------------|---|------------|--------------|
| CCP2324 | Synthetic | | |
| Description | Peptide to Fibronectin Analog | | |
| Form | Lyophilized powder | | |
| CAS Number | 125455-58-5 | | |
| Molecular Formula | C ₂₉ H ₅₁ N ₁₁ O ₁₁ | | |
| Molecular Weight | 729.80 | | |
| Purity | > 95% | | |
| Chemical Structure | Gly - Arg - Ala - Asp - Ser - Pro - Lys | | |
| Storage/Stability | Shipped at 4°C. Store at -20°C for one year. | | |
| Structure | | | |



Application key: E- ELISA, WB- Western blot, IH- Immunohistochemistry, IF- Immunofluorescence, FC- Flow cytometry, IC- Immunocytochemistry, IP- Immunoprecipitation, ChIP- Chromatin Immunoprecipitation, EMSA- Electrophoretic Mobility Shift Assay, SE- Sandwich ELISA, CBE- Cell-based ELISA, RNAi- RNA interference

Species reactivity key: H- Human, M- Mouse, R- Rat, B- Bovine, C- Chicken, D- Dog, Mk- Monkey, P- Pig, Rb- Rabbit, S- Sheep, Z- Zebrafish

COHESION BIOSCIENCES LIMITED

WEB
www.cohesionbio.com

ORDER
order@cohesionbio.com

SUPPORT
techsupport@cohesionbio.com

CUSTOM
custom@cohesionbio.com