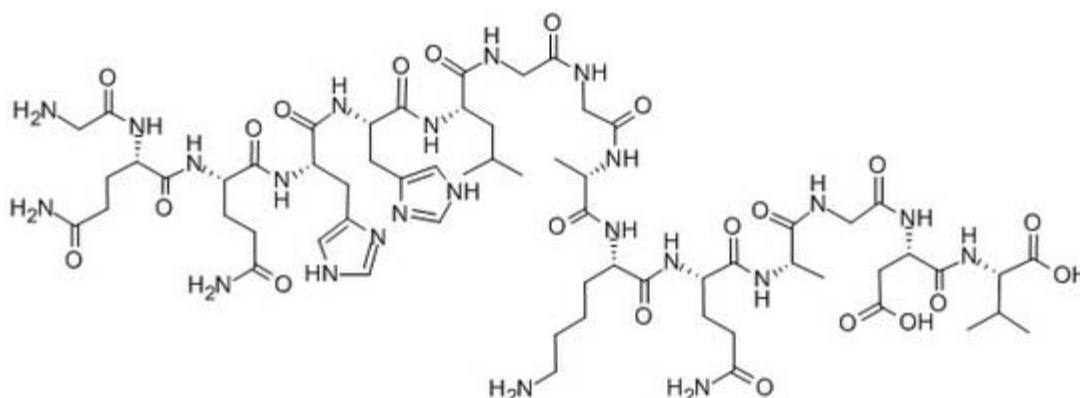


Fibrinogen Related Peptide

Catalog #	Source	Reactivity	Applications
CCP2321	Synthetic		
Description	Peptide to Fibrinogen Related Peptide		
Form	Lyophilized powder		
CAS Number	80755-86-8		
Molecular Formula	C ₆₂ H ₉₉ N ₂₃ O ₂₁		
Molecular Weight	1502.62		
Purity	> 95%		
Chemical Structure	Gly - Gln - Gln - His - His - Leu - Gly - Gly - Ala - Lys - Gln - Ala - Gly - Asp - Val		
Storage/Stability	Shipped at 4°C. Store at -20°C for one year.		
Structure			



Application key: E- ELISA, WB- Western blot, IH- Immunohistochemistry, IF- Immunofluorescence, FC- Flow cytometry, IC- Immunocytochemistry, IP- Immunoprecipitation, ChIP- Chromatin Immunoprecipitation, EMSA- Electrophoretic Mobility Shift Assay, SE- Sandwich ELISA, CBE- Cell-based ELISA, RNAi- RNA interference

Species reactivity key: H- Human, M- Mouse, R- Rat, B- Bovine, C- Chicken, D- Dog, Mk- Monkey, P- Pig, Rb- Rabbit, S- Sheep, Z- Zebrafish

COHESION BIOSCIENCES LIMITED

WEB
www.cohesionbio.com

ORDER
order@cohesionbio.com

SUPPORT
techsupport@cohesionbio.com

CUSTOM
custom@cohesionbio.com