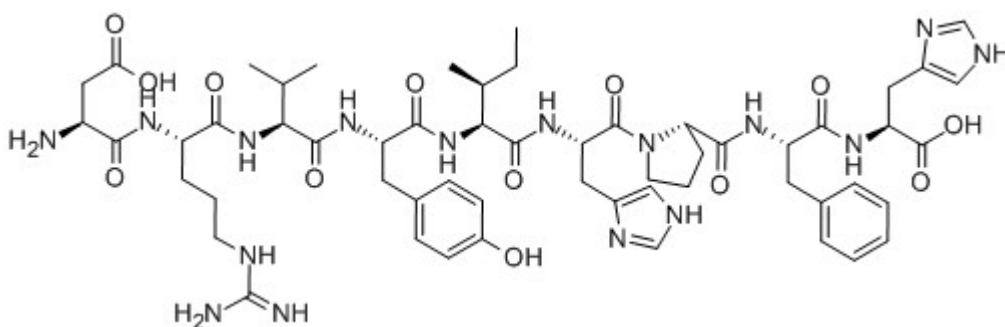


## Angiotensin A

| Catalog #                 | Source                                                          | Reactivity | Applications |
|---------------------------|-----------------------------------------------------------------|------------|--------------|
| CCP1937                   | Synthetic                                                       |            |              |
| <b>Description</b>        | Peptide to Angiotensin A                                        |            |              |
| <b>Form</b>               | Lyophilized powder                                              |            |              |
| <b>CAS Number</b>         | 34273-12-6                                                      |            |              |
| <b>Molecular Formula</b>  | C <sub>56</sub> H <sub>78</sub> N <sub>16</sub> O <sub>13</sub> |            |              |
| <b>Molecular Weight</b>   | 1183.35                                                         |            |              |
| <b>Purity</b>             | > 95%                                                           |            |              |
| <b>Chemical Structure</b> | Asp - Arg - Val - Tyr - Ile - His - Pro - Phe - His             |            |              |
| <b>Storage/Stability</b>  | Shipped at 4°C. Store at -20°C for one year.                    |            |              |

### Structure



**Application key:** E- ELISA, WB- Western blot, IH- Immunohistochemistry, IF- Immunofluorescence, FC- Flow cytometry, IC- Immunocytochemistry, IP- Immunoprecipitation, ChIP- Chromatin Immunoprecipitation, EMSA- Electrophoretic Mobility Shift Assay, SE- Sandwich ELISA, CBE- Cell-based ELISA, RNAi- RNA interference

**Species reactivity key:** H- Human, M- Mouse, R- Rat, B- Bovine, C- Chicken, D- Dog, Mk- Monkey, P- Pig, Rb- Rabbit, S- Sheep, Z- Zebrafish

### COHESION BIOSCIENCES LIMITED

**WEB**  
[www.cohesionbio.com](http://www.cohesionbio.com)

**ORDER**  
[order@cohesionbio.com](mailto:order@cohesionbio.com)

**SUPPORT**  
[techsupport@cohesionbio.com](mailto:techsupport@cohesionbio.com)

**CUSTOM**  
[custom@cohesionbio.com](mailto:custom@cohesionbio.com)