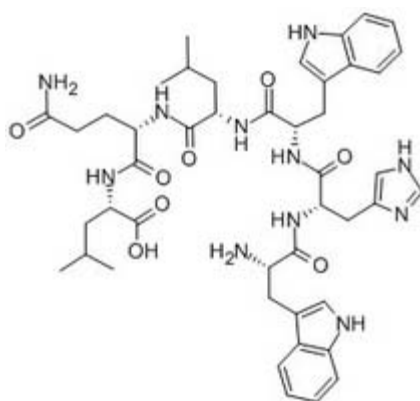


Alpha-Mating Factor (1-6)

Catalog #	Source	Reactivity	Applications
CCP1910	Synthetic		
Description	Peptide to Alpha-Mating Factor (1-6)		
Form	Lyophilized powder		
CAS Number	65418-88-4		
Molecular Formula	C ₄₅ H ₅₉ N ₁₁ O ₈		
Molecular Weight	882.04		
Purity	> 95%		
Chemical Structure	Trp - His - Trp - Leu - Gln - Leu		
Storage/Stability	Shipped at 4°C. Store at -20°C for one year.		
Structure			



Application key: E- ELISA, WB- Western blot, IH- Immunohistochemistry, IF- Immunofluorescence, FC- Flow cytometry, IC- Immunocytochemistry, IP- Immunoprecipitation, ChIP- Chromatin Immunoprecipitation, EMSA- Electrophoretic Mobility Shift Assay, SE- Sandwich ELISA, CBE- Cell-based ELISA, RNAi- RNA interference

Species reactivity key: H- Human, M- Mouse, R- Rat, B- Bovine, C- Chicken, D- Dog, Mk- Monkey, P- Pig, Rb- Rabbit, S- Sheep, Z- Zebrafish

COHESION BIOSCIENCES LIMITED

WEB
www.cohesionbio.com

ORDER
order@cohesionbio.com

SUPPORT
techsupport@cohesionbio.com

CUSTOM
custom@cohesionbio.com