

Product Data Sheet

[Phe17]-Apelin 17

Catalog #	Source	Reactivity	Applications
CCP1738	Synthetic		
Description	Peptide to [Phe17]-Apelin 17		
Biological Description	<p>Apelin-17 is an endogenous ligand of the human orphan G protein-coupled receptor APJ, reported to act as a coreceptor of CD4 for human and simian immunodeficiency viruses. Apelin-17 and apelin-13 represent the predominant molecular forms of apelin present in the whole brain, hypothalamus, and plasma. Like apelin-13, apelin-17 exhibited a high activity on extracellular acidification rate and strongly inhibited forskolin-stimulated cAMP production in CHO cells expressing the human or the rat apelin receptor. The peptide might play a crucial role in the maintenance of body fluid homeostasis by counteracting AVP (arginine vasopressin) actions through inhibition of AVP neuron activity and AVP release.</p>		
Form	Lyophilized powder		
CAS Number	217082-57-0		
Molecular Formula	C96H156N34O20S		
Molecular Weight	2138.59		
Purity	> 95%		
Chemical Structure	<p>Lys - Phe - Arg - Arg - Gln - Arg - Pro - Arg - Leu - Ser - His - Lys - Gly - Pro - Met - Pro - Phe</p>		
Storage/Stability	Shipped at 4°C. Store at -20°C for one year.		
Structure			

Application key: E- ELISA, WB- Western blot, IH- Immunohistochemistry, IF- Immunofluorescence, FC- Flow cytometry, IC- Immunocytochemistry, IP- Immunoprecipitation, ChIP- Chromatin Immunoprecipitation, EMSA- Electrophoretic Mobility Shift Assay, SE- Sandwich ELISA, CBE- Cell-based ELISA, RNAi- RNA interference

Species reactivity key: H- Human, M- Mouse, R- Rat, B- Bovine, C- Chicken, D- Dog, Mk- Monkey, P- Pig, Rb- Rabbit, S- Sheep, Z- Zebrafish

COHESION BIOSCIENCES LIMITED

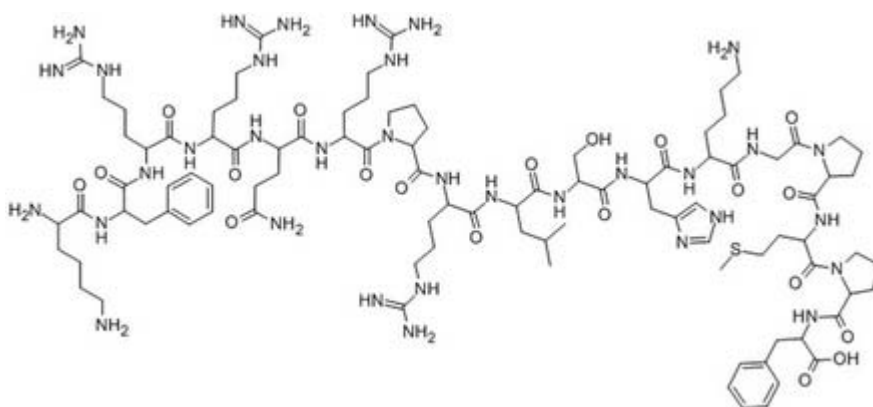
WEB
www.cohesionbio.com

ORDER
order@cohesionbio.com

SUPPORT
techsupport@cohesionbio.com

CUSTOM
custom@cohesionbio.com

Product Data Sheet



Application key: E- ELISA, WB- Western blot, IH- Immunohistochemistry, IF- Immunofluorescence, FC- Flow cytometry, IC- Immunocytochemistry, IP- Immunoprecipitation, ChIP- Chromatin Immunoprecipitation, EMSA- Electrophoretic Mobility Shift Assay, SE- Sandwich ELISA, CBE- Cell-based ELISA, RNAi- RNA interference

Species reactivity key: H- Human, M- Mouse, R- Rat, B- Bovine, C- Chicken, D- Dog, Mk- Monkey, P- Pig, Rb- Rabbit, S- Sheep, Z- Zebrafish

COHESION BIOSCIENCES LIMITED

WEB
www.cohesionbio.com

ORDER
order@cohesionbio.com

SUPPORT
techsupport@cohesionbio.com

CUSTOM
custom@cohesionbio.com