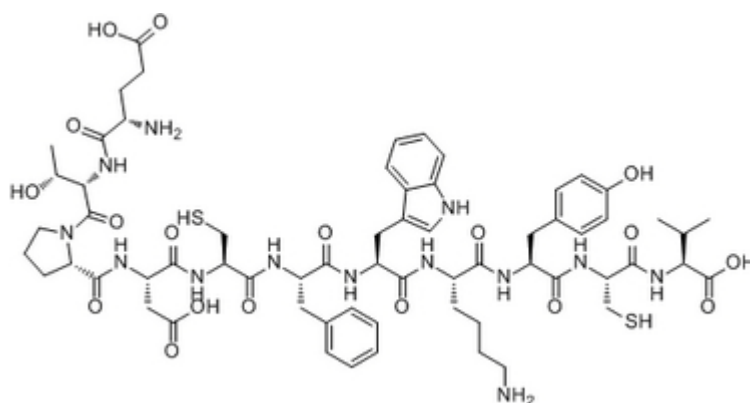


Urotensin II , Human

Catalog #	Source	Reactivity	Applications
CCP1468	Synthetic		
Description	Peptide to Urotensin II , Human		
Biological Description	Urotensin II is a vasoactive somatostatin-like cyclic peptide, which has long been regarded as a peptide exclusively produced by the urophysis of teleost fish. It has also been cloned from man. It was found to be the most potent mammalian vasoconstrictor		
Form	Lyophilized powder		
CAS Number	251293-28-4		
Molecular Formula	C ₆₄ H ₈₇ N ₁₃ O ₁₈ S ₂		
Molecular Weight	1390.58		
Purity	> 95%		
Chemical Structure	H - Glu - Thr - Pro - Asp - Cys - Phe - Trp - Lys - Tyr - Cys - Val - OH (Disulfide bridge Cys5 - Cys10)		
Storage/Stability	Shipped at 4°C. Store at -20°C for one year.		
Structure			



Application key: E- ELISA, WB- Western blot, IH- Immunohistochemistry, IF- Immunofluorescence, FC- Flow cytometry, IC- Immunocytochemistry, IP- Immunoprecipitation, ChIP- Chromatin Immunoprecipitation, EMSA- Electrophoretic Mobility Shift Assay, SE- Sandwich ELISA, CBE- Cell-based ELISA, RNAi- RNA interference

Species reactivity key: H- Human, M- Mouse, R- Rat, B- Bovine, C- Chicken, D- Dog, Mk- Monkey, P- Pig, Rb- Rabbit, S- Sheep, Z- Zebrafish

COHESION BIOSCIENCES LIMITED

WEB
www.cohesionbio.com

ORDER
order@cohesionbio.com

SUPPORT
techsupport@cohesionbio.com

CUSTOM
custom@cohesionbio.com

Product Data Sheet

Application key: E- ELISA, WB- Western blot, IH- Immunohistochemistry, IF- Immunofluorescence, FC- Flow cytometry, IC- Immunocytochemistry, IP- Immunoprecipitation, ChIP- Chromatin Immunoprecipitation, EMSA- Electrophoretic Mobility Shift Assay, SE- Sandwich ELISA, CBE- Cell-based ELISA, RNAi- RNA interference

Species reactivity key: H- Human, M- Mouse, R- Rat, B- Bovine, C- Chicken, D- Dog, Mk- Monkey, P- Pig, Rb- Rabbit, S- Sheep, Z- Zebrafish

COHESION BIOSCIENCES LIMITED

WEB

www.cohesionbio.com

ORDER

order@cohesionbio.com

SUPPORT

techsupport@cohesionbio.com

CUSTOM

custom@cohesionbio.com