

# Product Data Sheet

## Anti-CD300e Antibody

| Catalog #                | Source   | Reactivity | Applications |
|--------------------------|--|------------|--------------|
| CQA4007                  | Rabbit   | H, M, R    | WB           |
| <b>Description</b>       | Rabbit polyclonal antibody to CD300e   |            |              |
| <b>Immunogen</b>         | Recombinant fusion protein of human CD300e. The exact sequence is proprietary.   |            |              |
| <b>Purification</b>      | The antibody was purified by immunogen affinity chromatography.  |            |              |
| <b>Specificity</b>       | Recognizes endogenous levels of CD300e protein   |            |              |
| <b>Clonality</b>         | Polyclonal   |            |              |
| <b>Conjugation</b>       |  |            |              |
| <b>Form</b>              | Liquid in 0.42% Potassium phosphate, 0.87% Sodium chloride, pH 7.3, 30% glycerol, and 0.01% sodium azide.  |            |              |
| <b>Dilution</b>          | WB (1/500 - 1/2000)  |            |              |
| <b>Gene Symbol</b>       | CD300E   |            |              |
| <b>Alternative Names</b> | CD300LE; CLM2; CMRF35A5; IREM2; CMRF35-like molecule 2; CLM-2; CD300 antigen-like family member E; CMRF35-A5; Immune receptor expressed on myeloid cells 2; IREM-2; Polymeric immunoglobulin receptor 2; PIgR-2; PIgR2; Poly-Ig receptor 2; CD300e |            |              |
| <b>Entrez Gene</b>       | 342510 (Human); 217306 (Mouse)   |            |              |
| <b>SwissProt</b>         | Q496F6 (Human); Q8K249 (Mouse)   |            |              |
| <b>Storage/Stability</b> | Shipped at 4°C. Upon delivery aliquot and store at -20°C for one year. Avoid freeze/thaw cycles.   |            |              |

**Application key:** E- ELISA, WB- Western blot, IH- Immunohistochemistry, IF- Immunofluorescence, FC- Flow cytometry, IC- Immunocytochemistry, IP- Immunoprecipitation, ChIP- Chromatin Immunoprecipitation, EMSA- Electrophoretic Mobility Shift Assay, BL- Blocking, SE- Sandwich ELISA, CBE- Cell-based ELISA, RNAi- RNA interference

**Species reactivity key:** H- Human, M- Mouse, R- Rat, B- Bovine, C- Chicken, D- Dog, G- Goat, Mk- Monkey, P- Pig, Rb- Rabbit, S- Sheep, Z- Zebrafish

### COHESION BIOSCIENCES LIMITED

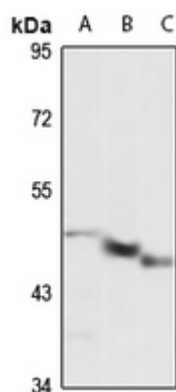
**WEB**  
[www.cohesionbio.com](http://www.cohesionbio.com)

**ORDER**  
[order@cohesionbio.com](mailto:order@cohesionbio.com)

**SUPPORT**  
[techsupport@cohesionbio.com](mailto:techsupport@cohesionbio.com)

**CUSTOM**  
[custom@cohesionbio.com](mailto:custom@cohesionbio.com)

## Product Data Sheet



Western blot analysis of CD300e expression in HeLa (A), mouse brain (B), rat heart (C) whole cell lysates. (Predicted band size: 22 kD; Observed band size: 50 kD)

**Application key:** E- ELISA, WB- Western blot, IH- Immunohistochemistry, IF- Immunofluorescence, FC- Flow cytometry, IC- Immunocytochemistry, IP- Immunoprecipitation, ChIP- Chromatin Immunoprecipitation, EMSA- Electrophoretic Mobility Shift Assay, BL- Blocking, SE- Sandwich ELISA, CBE- Cell-based ELISA, RNAi- RNA interference

**Species reactivity key:** H- Human, M- Mouse, R- Rat, B- Bovine, C- Chicken, D- Dog, G- Goat, Mk- Monkey, P- Pig, Rb- Rabbit, S- Sheep, Z- Zebrafish

**COHESION BIOSCIENCES LIMITED**

**WEB**  
[www.cohesionbio.com](http://www.cohesionbio.com)

**ORDER**  
[order@cohesionbio.com](mailto:order@cohesionbio.com)

**SUPPORT**  
[techsupport@cohesionbio.com](mailto:techsupport@cohesionbio.com)

**CUSTOM**  
[custom@cohesionbio.com](mailto:custom@cohesionbio.com)