

# Product Data Sheet

## Anti-FANCL Antibody

| Catalog #                | Source                                                                                                                           | Reactivity | Applications |
|--------------------------|----------------------------------------------------------------------------------------------------------------------------------|------------|--------------|
| CQA3220                  | Rabbit                                                                                                                           | H, M       | WB           |
| <b>Description</b>       | Rabbit polyclonal antibody to FANCL                                                                                              |            |              |
| <b>Immunogen</b>         | Recombinant full length protein of human FANCL                                                                                   |            |              |
| <b>Purification</b>      | The antibody was purified by immunogen affinity chromatography.                                                                  |            |              |
| <b>Specificity</b>       | Recognizes endogenous levels of FANCL protein.                                                                                   |            |              |
| <b>Clonality</b>         | Polyclonal                                                                                                                       |            |              |
| <b>Conjugation</b>       |                                                                                                                                  |            |              |
| <b>Form</b>              | Liquid in 0.42% Potassium phosphate, 0.87% Sodium chloride, pH 7.3, 30% glycerol, and 0.01% sodium azide.                        |            |              |
| <b>Dilution</b>          | WB (1/500 - 1/1000)                                                                                                              |            |              |
| <b>Gene Symbol</b>       | FANCL                                                                                                                            |            |              |
| <b>Alternative Names</b> | PHF9; E3 ubiquitin-protein ligase FANCL; Fanconi anemia group L protein; Fanconi anemia-associated polypeptide of 43 kDa; FAAP43 |            |              |
| <b>Entrez Gene</b>       | 55120 (Human); 67030 (Mouse)                                                                                                     |            |              |
| <b>SwissProt</b>         | Q9NW38 (Human); Q9CR14 (Mouse)                                                                                                   |            |              |
| <b>Storage/Stability</b> | Shipped at 4° C. Upon delivery aliquot and store at -20° C for one year. Avoid freeze/thaw cycles.                               |            |              |

**Application key:** E- ELISA, WB- Western blot, IH- Immunohistochemistry, IF- Immunofluorescence, FC- Flow cytometry, IC- Immunocytochemistry, IP- Immunoprecipitation, ChIP- Chromatin Immunoprecipitation, EMSA- Electrophoretic Mobility Shift Assay, BL- Blocking, SE- Sandwich ELISA, CBE- Cell-based ELISA, RNAi- RNA interference

**Species reactivity key:** H- Human, M- Mouse, R- Rat, B- Bovine, C- Chicken, D- Dog, G- Goat, Mk- Monkey, P- Pig, Rb- Rabbit, S- Sheep, Z- Zebrafish

### COHESION BIOSCIENCES LIMITED

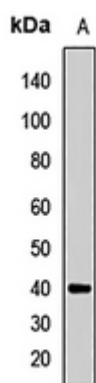
**WEB**  
www.cohesionbio.com

**ORDER**  
order@cohesionbio.com

**SUPPORT**  
techsupport@cohesionbio.com

**CUSTOM**  
custom@cohesionbio.com

## Product Data Sheet



Western blot analysis of FANCL expression in mouse thymus (A) whole cell lysates. (Predicted band size: 42; 43 kD; Observed band size: 40 kD)

**Application key:** E- ELISA, WB- Western blot, IH- Immunohistochemistry, IF- Immunofluorescence, FC- Flow cytometry, IC- Immunocytochemistry, IP- Immunoprecipitation, ChIP- Chromatin Immunoprecipitation, EMSA- Electrophoretic Mobility Shift Assay, BL- Blocking, SE- Sandwich ELISA, CBE- Cell-based ELISA, RNAi- RNA interference

**Species reactivity key:** H- Human, M- Mouse, R- Rat, B- Bovine, C- Chicken, D- Dog, G- Goat, Mk- Monkey, P- Pig, Rb- Rabbit, S- Sheep, Z- Zebrafish

**COHESION BIOSCIENCES LIMITED**

**WEB**  
[www.cohesionbio.com](http://www.cohesionbio.com)

**ORDER**  
[order@cohesionbio.com](mailto:order@cohesionbio.com)

**SUPPORT**  
[techsupport@cohesionbio.com](mailto:techsupport@cohesionbio.com)

**CUSTOM**  
[custom@cohesionbio.com](mailto:custom@cohesionbio.com)