

# Product Data Sheet

## Anti-Wilms Tumor 1 Antibody

| Catalog #                | Source  | Reactivity | Applications  |
|--------------------------|---|------------|---------------|
| CQA2322                  | Rabbit  | H, M       | WB, IH, IF/IC |
| <b>Description</b>       | Rabbit polyclonal antibody to Wilms Tumor 1   |            |               |
| <b>Immunogen</b>         | Recombinant full length protein of human Wilms Tumor 1  |            |               |
| <b>Purification</b>      | The antibody was purified by immunogen affinity chromatography.   |            |               |
| <b>Specificity</b>       | Recognizes endogenous levels of Wilms Tumor 1 protein.  |            |               |
| <b>Clonality</b>         | Polyclonal  |            |               |
| <b>Conjugation</b>       |   |            |               |
| <b>Form</b>              | Liquid in 0.42% Potassium phosphate, 0.87% Sodium chloride, pH 7.3, 30% glycerol, and 0.01% sodium azide. |            |               |
| <b>Dilution</b>          | WB (1/500 - 1/2000), IH (1/50 - 1/200), IF/IC (1/50 - 1/200)  |            |               |
| <b>Gene Symbol</b>       | WT1   |            |               |
| <b>Alternative Names</b> | Wilms tumor protein; WT33   |            |               |
| <b>Entrez Gene</b>       | 7490 (Human)  |            |               |
| <b>SwissProt</b>         | P19544 (Human); P22561 (Mouse)  |            |               |
| <b>Storage/Stability</b> | Shipped at 4° C. Upon delivery aliquot and store at -20° C for one year. Avoid freeze/thaw cycles.        |            |               |

**Application key:** E- ELISA, WB- Western blot, IH- Immunohistochemistry, IF- Immunofluorescence, FC- Flow cytometry, IC- Immunocytochemistry, IP- Immunoprecipitation, ChIP- Chromatin Immunoprecipitation, EMSA- Electrophoretic Mobility Shift Assay, BL- Blocking, SE- Sandwich ELISA, CBE- Cell-based ELISA, RNAi- RNA interference

**Species reactivity key:** H- Human, M- Mouse, R- Rat, B- Bovine, C- Chicken, D- Dog, G- Goat, Mk- Monkey, P- Pig, Rb- Rabbit, S- Sheep, Z- Zebrafish

### COHESION BIOSCIENCES LIMITED

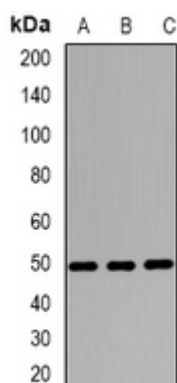
**WEB**  
[www.cohesionbio.com](http://www.cohesionbio.com)

**ORDER**  
[order@cohesionbio.com](mailto:order@cohesionbio.com)

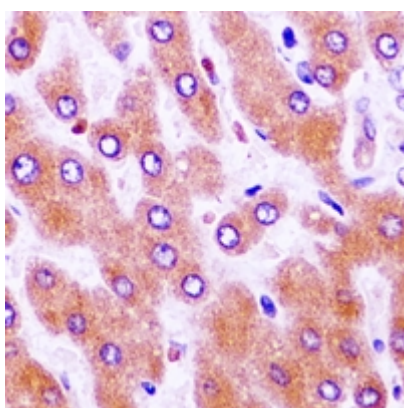
**SUPPORT**  
[techsupport@cohesionbio.com](mailto:techsupport@cohesionbio.com)

**CUSTOM**  
[custom@cohesionbio.com](mailto:custom@cohesionbio.com)

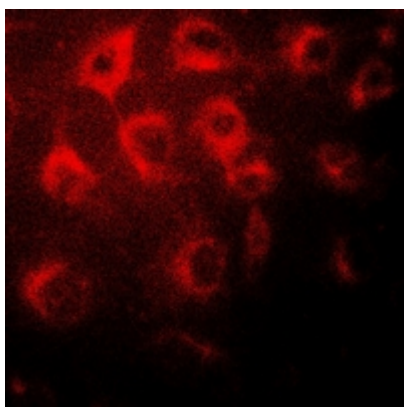
# Product Data Sheet



Western blot analysis of Wilms Tumor 1 expression in A549 (A), MCF7 (B), mouse heart (C) whole cell lysates. (Predicted band size: 33; 34; 47; 48; 49; 55; 56 kD; Observed band size: 49 kD)



Immunohistochemical analysis of Wilms Tumor 1 staining in human liver cancer formalin fixed paraffin embedded tissue section. The section was pre-treated using heat mediated antigen retrieval with sodium citrate buffer (pH 6.0). The section was then incubated with the antibody at room temperature and detected using an HRP conjugated compact polymer system. DAB was used as the chromogen. The section was then counterstained with haematoxylin and mounted with DPX.



Immunofluorescent analysis of Wilms Tumor 1 staining in MCF7 cells. Formalin-fixed cells were permeabilized with 0.1% Triton X-100 in TBS for 5-10 minutes and blocked with 3% BSA-PBS for 30 minutes at room temperature. Cells were probed with the primary antibody in 3% BSA-PBS and incubated overnight at 4 ° C in a humidified chamber. Cells were washed with PBST and incubated with a DyLight 594-conjugated secondary antibody (red) in PBS at room temperature in the dark.

**Application key:** E- ELISA, WB- Western blot, IH- Immunohistochemistry, IF- Immunofluorescence, FC- Flow cytometry, IC- Immunocytochemistry, IP- Immunoprecipitation, ChIP- Chromatin Immunoprecipitation, EMSA- Electrophoretic Mobility Shift Assay, BL- Blocking, SE- Sandwich ELISA, CBE- Cell-based ELISA, RNAi- RNA interference

**Species reactivity key:** H- Human, M- Mouse, R- Rat, B- Bovine, C- Chicken, D- Dog, G- Goat, Mk- Monkey, P- Pig, Rb- Rabbit, S- Sheep, Z- Zebrafish

**COHESION BIOSCIENCES LIMITED**

**WEB**  
[www.cohesionbio.com](http://www.cohesionbio.com)

**ORDER**  
[order@cohesionbio.com](mailto:order@cohesionbio.com)

**SUPPORT**  
[techsupport@cohesionbio.com](mailto:techsupport@cohesionbio.com)

**CUSTOM**  
[custom@cohesionbio.com](mailto:custom@cohesionbio.com)