

Anti-Beta2A-tubulin Antibody

Catalog #	Source	Reactivity	Applications
CPA9115	Mouse	H, M, R	WB, IP
Description	Mouse monoclonal antibody to Beta2A-tubulin		
Immunogen	KLH-conjugated synthetic peptide encompassing a sequence of human Beta2A-tubulin. The exact sequence is proprietary.		
Purification			
Specificity	Recognizes endogenous levels of Beta2A-tubulin protein.		
Clonality	Monoclonal		
Conjugation			
Form	Liquid in 0.42% Potassium phosphate, 0.87% Sodium chloride, pH 7.3, 30% glycerol, and 0.01% sodium azide.		
Dilution	WB (1/50000 - 1/100000), IP (1/100 - 1/200)		
Gene Symbol	TUBB2A		
Alternative Names	TUBB2; Tubulin beta-2A chain; Tubulin beta class IIa		
Entrez Gene	7280 (Human); 22151 (Mouse); 498736 (Rat)		
SwissProt	Q13885 (Human); Q7TMM9 (Mouse); P85108 (Rat)		
Storage/Stability	Shipped at 4°C. Upon delivery aliquot and store at -20°C for one year. Avoid freeze/thaw cycles.		

Application key: E- ELISA, WB- Western blot, IH- Immunohistochemistry, IF- Immunofluorescence, FC- Flow cytometry, IC- Immunocytochemistry, IP- Immunoprecipitation, CHIP- Chromatin Immunoprecipitation, EMSA- Electrophoretic Mobility Shift Assay, BL- Blocking, SE- Sandwich ELISA, CBE- Cell-based ELISA, RNAi- RNA interference

Species reactivity key: H- Human, M- Mouse, R- Rat, B- Bovine, C- Chicken, D- Dog, G- Goat, Mk- Monkey, P- Pig, Rb- Rabbit, S- Sheep, Z- Zebrafish

COHESION BIOSCIENCES LIMITED

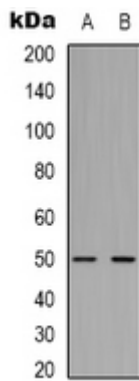
WEB
www.cohesionbio.com

ORDER
order@cohesionbio.com

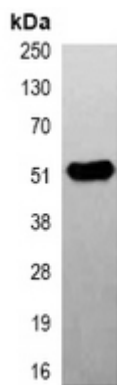
SUPPORT
techsupport@cohesionbio.com

CUSTOM
custom@cohesionbio.com

Product Data Sheet



Western blot analysis of Beta2A-tubulin expression in mouse brain (A), rat brain (B) whole cell lysates. (Predicted band size: 49 kD; Observed band size: 52 kD)



Immunoprecipitation of Beta2A-tubulin from 0.5mg mouse brain whole cell extract lysate, using Anti-Beta2A-tubulin Antibody.

Application key: E- ELISA, WB- Western blot, IH- Immunohistochemistry, IF- Immunofluorescence, FC- Flow cytometry, IC- Immunocytochemistry, IP- Immunoprecipitation, CHIP- Chromatin Immunoprecipitation, EMSA- Electrophoretic Mobility Shift Assay, BL- Blocking, SE- Sandwich ELISA, CBE- Cell-based ELISA, RNAi- RNA interference

Species reactivity key: H- Human, M- Mouse, R- Rat, B- Bovine, C- Chicken, D- Dog, G- Goat, Mk- Monkey, P- Pig, Rb- Rabbit, S- Sheep, Z- Zebrafish

COHESION BIOSCIENCES LIMITED

WEB

www.cohesionbio.com

ORDER

order@cohesionbio.com

SUPPORT

techsupport@cohesionbio.com

CUSTOM

custom@cohesionbio.com