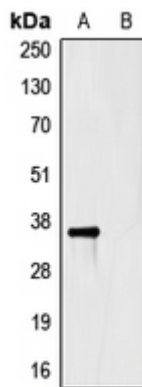


## Anti-HSV-tag Antibody

Catalog #	Source	Reactivity	Applications
CPA9007	Mouse	N/A	E, WB
<b>Description</b>	Mouse monoclonal antibody to HSV-tag		
<b>Immunogen</b>	KLH-conjugated synthetic peptide CQPELAPEDPED.		
<b>Purification</b>	The antibody was purified by affinity chromatography.		
<b>Specificity</b>	Recognizes the HSV-tag fused to the amino- or carboxy- termini of targeted proteins in transfected or transformed cells.		
<b>Clonality</b>	Monoclonal		
<b>Form</b>	Liquid in PBS, pH 7.3, 0.2% BSA, and 0.02% sodium azide.		
<b>Dilution</b>	WB (1/500 - 1/1000)		
<b>Storage/Stability</b>	Shipped and store at 4°C for one year. Do not freeze.		



Western blot analysis of Anti-HSV-tag Antibody against HEK293T cells transfected with vector overexpressing HSV tag (A) and untransfected (B).

**Application key:** E- ELISA, WB- Western blot, IH- Immunohistochemistry, IF- Immunofluorescence, FC- Flow cytometry, IC- Immunocytochemistry, IP- Immunoprecipitation, ChIP- Chromatin Immunoprecipitation, EMSA- Electrophoretic Mobility Shift Assay, BL- Blocking, SE- Sandwich ELISA, CBE- Cell-based ELISA, RNAi- RNA interference

**Species reactivity key:** H- Human, M- Mouse, R- Rat, B- Bovine, C- Chicken, D- Dog, G- Goat, Mk- Monkey, P- Pig, Rb- Rabbit, S- Sheep, Z- Zebrafish

### COHESION BIOSCIENCES LIMITED

**WEB**  
[www.cohesionbio.com](http://www.cohesionbio.com)

**ORDER**  
[order@cohesionbio.com](mailto:order@cohesionbio.com)

**SUPPORT**  
[techsupport@cohesionbio.com](mailto:techsupport@cohesionbio.com)

**CUSTOM**  
[custom@cohesionbio.com](mailto:custom@cohesionbio.com)