

Anti-CD4 Antibody-PE labeled

| Catalog # | Source | Reactivity | Applications |
|---------------------------|---|------------|--------------|
| CPA8434 | Mouse | H | IF, FC |
| Description | Mouse monoclonal antibody to CD4 (PE) | | |
| Purification | The antibody was purified by affinity chromatography. | | |
| Specificity | Recognises human CD4. | | |
| Clonality | Monoclonal | | |
| Conjugation | PE | | |
| Form | IgG2a. Liquid in PBS, pH 7.3, 0.2% BSA, and 0.02% sodium azide. | | |
| Gene Symbol | CD4 | | |
| Alternative Names | T-cell surface glycoprotein CD4; T-cell surface antigen T4/Leu-3; CD antigen CD4 | | |
| Entrez Gene | 920 (Human) | | |
| SwissProt | P01730 (Human) | | |
| Storage/Stability | Shipped and store at 4°C for one year. Do not freeze. | | |
| Directions for Use | <ol style="list-style-type: none">1. Take 100 ul peripheral blood anticoagulated by EDTA and add to the bottom of 5 ml tube.2. Add 10 ul labeled antibody to the bottom of flow tube mixing with the whole blood, incubate for 20 minutes at room temperature away from light.3. Add 2 ml RBC lysis buffer, incubate for 10 minutes away from light after mixing, dissolve red blood cells.4. Sample tube is set to 1000 rpm centrifugation for 5 minutes, discard the supernatant.5. Add 2 ml PBS wash buffer to resuspend the cells, then 1000 rpm centrifugation for 5 minutes, discard the supernatant. | | |

Application key: E- ELISA, WB- Western blot, IH- Immunohistochemistry, IF- Immunofluorescence, FC- Flow cytometry, IC- Immunocytochemistry, IP- Immunoprecipitation, CHIP- Chromatin Immunoprecipitation, EMSA- Electrophoretic Mobility Shift Assay, BL- Blocking, SE- Sandwich ELISA, CBE- Cell-based ELISA, RNAi- RNA interference

Species reactivity key: H- Human, M- Mouse, R- Rat, B- Bovine, C- Chicken, D- Dog, G- Goat, Mk- Monkey, P- Pig, Rb- Rabbit, S- Sheep, Z- Zebrafish

COHESION BIOSCIENCES LIMITED

WEB
www.cohesionbio.com

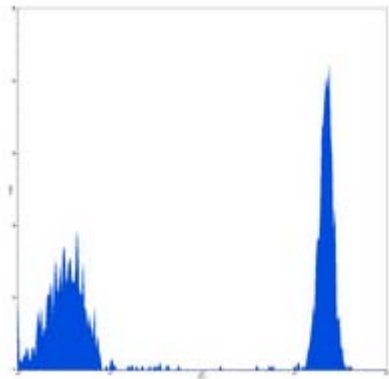
ORDER
order@cohesionbio.com

SUPPORT
techsupport@cohesionbio.com

CUSTOM
custom@cohesionbio.com

Product Data Sheet

6. Add 0.5 ml PBS wash buffer to resuspend the cells and detect by flow cytometry (sample should be determined on the day on the machine and can also be added fixation overnight at 4 °C then measured).



Flow cytometric analysis of human peripheral blood lymphocytes using Anti-CD4 Antibody-PE labeled.

Application key: E- ELISA, WB- Western blot, IH- Immunohistochemistry, IF- Immunofluorescence, FC- Flow cytometry, IC- Immunocytochemistry, IP- Immunoprecipitation, CHIP- Chromatin Immunoprecipitation, EMSA- Electrophoretic Mobility Shift Assay, BL- Blocking, SE- Sandwich ELISA, CBE- Cell-based ELISA, RNAi- RNA interference

Species reactivity key: H- Human, M- Mouse, R- Rat, B- Bovine, C- Chicken, D- Dog, G- Goat, Mk- Monkey, P- Pig, Rb- Rabbit, S- Sheep, Z- Zebrafish

COHESION BIOSCIENCES LIMITED

WEB

www.cohesionbio.com

ORDER

order@cohesionbio.com

SUPPORT

techsupport@cohesionbio.com

CUSTOM

custom@cohesionbio.com