

## Anti-CD48 Antibody-FITC labeled

Catalog #	Source	Reactivity	Applications
CPA8372	Mouse	H	IF, FC
<b>Description</b>	Mouse monoclonal antibody to CD48 (FITC)		
<b>Purification</b>	The antibody was purified by affinity chromatography.		
<b>Specificity</b>	Recognises human CD48.		
<b>Clonality</b>	Monoclonal		
<b>Conjugation</b>	FITC		
<b>Form</b>	IgG1. Liquid in PBS, pH 7.3, 0.2% BSA, and 0.02% sodium azide.		
<b>Gene Symbol</b>	CD48		
<b>Alternative Names</b>	BCM1; BLAST1; CD48 antigen; B-lymphocyte activation marker BLAST-1; BCM1 surface antigen; Leukocyte antigen MEM-102; SLAM family member 2; SLAMF2; Signaling lymphocytic activation molecule 2; TCT.1; CD antigen CD48		
<b>Entrez Gene</b>	962 (Human)		
<b>SwissProt</b>	P09326 (Human)		
<b>Storage/Stability</b>	Shipped and store at 4°C for one year. Do not freeze.		
<b>Directions for Use</b>	<ol style="list-style-type: none"> <li>1. Take 100 ul peripheral blood anticoagulated by EDTA and add to the bottom of 5 ml tube.</li> <li>2. Add 10 ul labeled antibody to the bottom of flow tube mixing with the whole blood, incubate for 20 minutes at room temperature away from light.</li> <li>3. Add 2 ml RBC lysis buffer, incubate for 10 minutes away from light after mixing, dissolve red blood cells.</li> <li>4. Sample tube is set to 1000 rpm centrifugation for 5 minutes, discard the supernatant.</li> </ol>		

**Application key:** E- ELISA, WB- Western blot, IH- Immunohistochemistry, IF- Immunofluorescence, FC- Flow cytometry, IC- Immunocytochemistry, IP- Immunoprecipitation, ChIP- Chromatin Immunoprecipitation, EMSA- Electrophoretic Mobility Shift Assay, BL- Blocking, SE- Sandwich ELISA, CBE- Cell-based ELISA, RNAi- RNA interference

**Species reactivity key:** H- Human, M- Mouse, R- Rat, B- Bovine, C- Chicken, D- Dog, G- Goat, Mk- Monkey, P- Pig, Rb- Rabbit, S- Sheep, Z- Zebrafish

### COHESION BIOSCIENCES LIMITED

**WEB**  
[www.cohesionbio.com](http://www.cohesionbio.com)

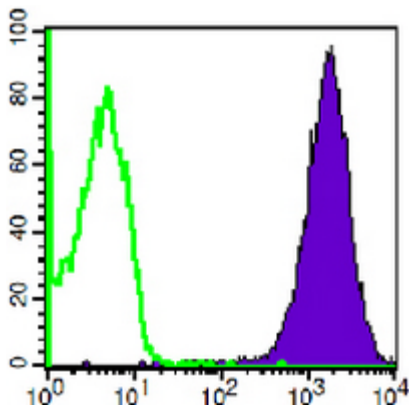
**ORDER**  
[order@cohesionbio.com](mailto:order@cohesionbio.com)

**SUPPORT**  
[techsupport@cohesionbio.com](mailto:techsupport@cohesionbio.com)

**CUSTOM**  
[custom@cohesionbio.com](mailto:custom@cohesionbio.com)

## Product Data Sheet

5. Add 2 ml PBS wash buffer to resuspend the cells, then 1000 rpm centrifugation for 5 minutes, discard the supernatant.
6. Add 0.5 ml PBS wash buffer to resuspend the cells and detect by flow cytometry (sample should be determined on the day on the machine and can also be added fixation overnight at 4 °C then measured).



Flow cytometric analysis of human peripheral blood monocytes using Anti-CD48 Antibody-FITC labeled.

**Application key:** E- ELISA, WB- Western blot, IH- Immunohistochemistry, IF- Immunofluorescence, FC- Flow cytometry, IC- Immunocytochemistry, IP- Immunoprecipitation, CHIP- Chromatin Immunoprecipitation, EMSA- Electrophoretic Mobility Shift Assay, BL- Blocking, SE- Sandwich ELISA, CBE- Cell-based ELISA, RNAi- RNA interference

**Species reactivity key:** H- Human, M- Mouse, R- Rat, B- Bovine, C- Chicken, D- Dog, G- Goat, Mk- Monkey, P- Pig, Rb- Rabbit, S- Sheep, Z- Zebrafish

### COHESION BIOSCIENCES LIMITED

**WEB**

[www.cohesionbio.com](http://www.cohesionbio.com)

**ORDER**

[order@cohesionbio.com](mailto:order@cohesionbio.com)

**SUPPORT**

[techsupport@cohesionbio.com](mailto:techsupport@cohesionbio.com)

**CUSTOM**

[custom@cohesionbio.com](mailto:custom@cohesionbio.com)