

## Anti-Paxillin Antibody [KO/KD Validated]

Catalog #	Source	Reactivity	Applications
CPA1981	Rabbit	H, M, R	WB, IH

<b>Description</b>	Rabbit polyclonal antibody to Paxillin
<b>Immunogen</b>	KLH-conjugated synthetic peptide encompassing a sequence within the center region of human Paxillin. The exact sequence is proprietary.
<b>Purification</b>	The antibody was purified by immunogen affinity chromatography.
<b>Specificity</b>	Recognizes endogenous levels of Paxillin protein.
<b>Clonality</b>	Polyclonal
<b>Conjugation</b>	
<b>Form</b>	Liquid in 0.42% Potassium phosphate, 0.87% Sodium chloride, pH 7.3, 30% glycerol, and 0.01% sodium azide.
<b>Dilution</b>	WB (1/500 - 1/1000), IH (1/50 - 1/100)
<b>Gene Symbol</b>	PXN
<b>Alternative Names</b>	Paxillin
<b>Entrez Gene</b>	5829 (Human); 19303 (Mouse); 360820 (Rat)
<b>SwissProt</b>	P49023 (Human); Q8VI36 (Mouse); Q66H76 (Rat)
<b>Storage/Stability</b>	Shipped at 4°C. Upon delivery aliquot and store at -20°C for one year. Avoid freeze/thaw cycles.

**Application key:** E- ELISA, WB- Western blot, IH- Immunohistochemistry, IF- Immunofluorescence, FC- Flow cytometry, IC- Immunocytochemistry, IP- Immunoprecipitation, ChIP- Chromatin Immunoprecipitation, EMSA- Electrophoretic Mobility Shift Assay, BL- Blocking, SE- Sandwich ELISA, CBE- Cell-based ELISA, RNAi- RNA interference

**Species reactivity key:** H- Human, M- Mouse, R- Rat, B- Bovine, C- Chicken, D- Dog, G- Goat, Mk- Monkey, P- Pig, Rb- Rabbit, S- Sheep, Z- Zebrafish

### COHESION BIOSCIENCES LIMITED

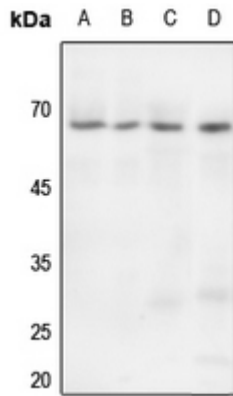
**WEB**  
[www.cohesionbio.com](http://www.cohesionbio.com)

**ORDER**  
[order@cohesionbio.com](mailto:order@cohesionbio.com)

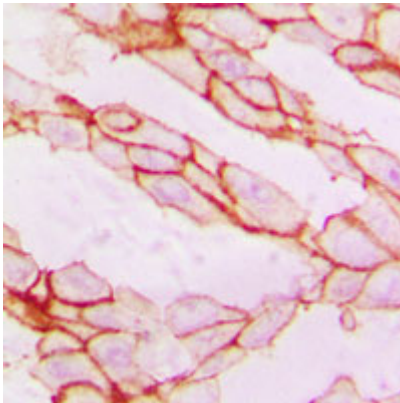
**SUPPORT**  
[techsupport@cohesionbio.com](mailto:techsupport@cohesionbio.com)

**CUSTOM**  
[custom@cohesionbio.com](mailto:custom@cohesionbio.com)

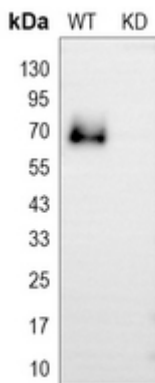
# Product Data Sheet



Western blot analysis of Paxillin expression in HeLa (A), H466 (B), mouse lung (C), rat lung (D) whole cell lysates. (Predicted band size: 64 kD; Observed band size: 68 kD)



Immunohistochemical analysis of Paxillin staining in human breast cancer formalin fixed paraffin embedded tissue section. The section was pre-treated using heat mediated antigen retrieval with sodium citrate buffer (pH 6.0). The section was then incubated with the antibody at room temperature and detected using an HRP conjugated compact polymer system. DAB was used as the chromogen. The section was then counterstained with haematoxylin and mounted with DPX.



Western blot analysis of Paxillin expression in wild type (WT) and knockdown (KD) HeLa cell lysates.

**Application key:** E- ELISA, WB- Western blot, IH- Immunohistochemistry, IF- Immunofluorescence, FC- Flow cytometry, IC- Immunocytochemistry, IP- Immunoprecipitation, CHIP- Chromatin Immunoprecipitation, EMSA- Electrophoretic Mobility Shift Assay, BL- Blocking, SE- Sandwich ELISA, CBE- Cell-based ELISA, RNAi- RNA interference

**Species reactivity key:** H- Human, M- Mouse, R- Rat, B- Bovine, C- Chicken, D- Dog, G- Goat, Mk- Monkey, P- Pig, Rb- Rabbit, S- Sheep, Z- Zebrafish

## COHESION BIOSCIENCES LIMITED

**WEB**  
[www.cohesionbio.com](http://www.cohesionbio.com)

**ORDER**  
[order@cohesionbio.com](mailto:order@cohesionbio.com)

**SUPPORT**  
[techsupport@cohesionbio.com](mailto:techsupport@cohesionbio.com)

**CUSTOM**  
[custom@cohesionbio.com](mailto:custom@cohesionbio.com)