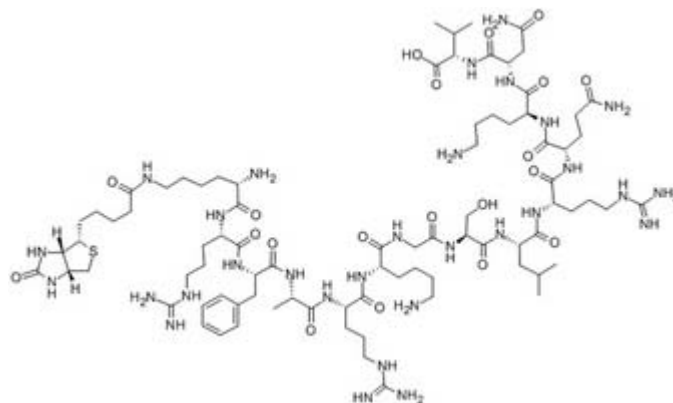


[Ser25]-PKC (19-31), biotinylated

Catalog #	Source	Reactivity	Applications
CCP1727	Synthetic		

Description	Peptide to [Ser25]-PKC (19-31), biotinylated
Biological Description	
Form	Lyophilized powder
CAS Number	177966-62-0
Molecular Formula	C83H144N30O20S
Molecular Weight	1914.30
Purity	> 95%
Chemical Structure	Lys(Biotin) - Arg - Phe - Ala - Arg - Lys - Gly - Ser - Leu - Arg - Gln - Lys - Asn - Val
Storage/Stability	Shipped at 4°C. Store at -20°C for one year.
Structure	



Application key: E- ELISA, WB- Western blot, IH- Immunohistochemistry, IF- Immunofluorescence, FC- Flow cytometry, IC- Immunocytochemistry, IP- Immunoprecipitation, ChIP- Chromatin Immunoprecipitation, EMSA- Electrophoretic Mobility Shift Assay, SE- Sandwich ELISA, CBE- Cell-based ELISA, RNAi- RNA interference

Species reactivity key: H- Human, M- Mouse, R- Rat, B- Bovine, C- Chicken, D- Dog, Mk- Monkey, P- Pig, Rb- Rabbit, S- Sheep, Z- Zebrafish

COHESION BIOSCIENCES LIMITED

WEB
www.cohesionbio.com

ORDER
order@cohesionbio.com

SUPPORT
techsupport@cohesionbio.com

CUSTOM
custom@cohesionbio.com