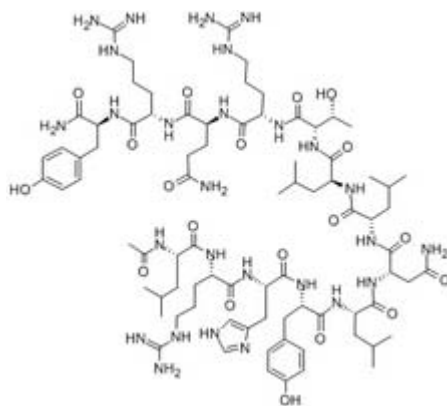


Ac-[Leu28, 31]-Neuropeptide Y (24-36)

Catalog #	Source	Reactivity	Applications
CCP1725	Synthetic		

Description	Peptide to Ac-[Leu28, 31]-Neuropeptide Y (24-36)
Biological Description	Selective NPY Y2 receptor agonist.
Form	Lyophilized powder
CAS Number	155709-24-3
Molecular Formula	C81H131N27O19
Molecular Weight	1787.10
Purity	> 95%
Chemical Structure	Ac - Leu - Arg - His - Tyr - Leu - Asn - Leu - Leu - Thr - Arg - Gln - Arg - Tyr - NH ₂
Storage/Stability	Shipped at 4°C. Store at -20°C for one year.
Structure	



Application key: E- ELISA, WB- Western blot, IH- Immunohistochemistry, IF- Immunofluorescence, FC- Flow cytometry, IC- Immunocytochemistry, IP- Immunoprecipitation, ChIP- Chromatin Immunoprecipitation, EMSA- Electrophoretic Mobility Shift Assay, SE- Sandwich ELISA, CBE- Cell-based ELISA, RNAi- RNA interference

Species reactivity key: H- Human, M- Mouse, R- Rat, B- Bovine, C- Chicken, D- Dog, Mk- Monkey, P- Pig, Rb- Rabbit, S- Sheep, Z- Zebrafish

COHESION BIOSCIENCES LIMITED

WEB
www.cohesionbio.com

ORDER
order@cohesionbio.com

SUPPORT
techsupport@cohesionbio.com

CUSTOM
custom@cohesionbio.com