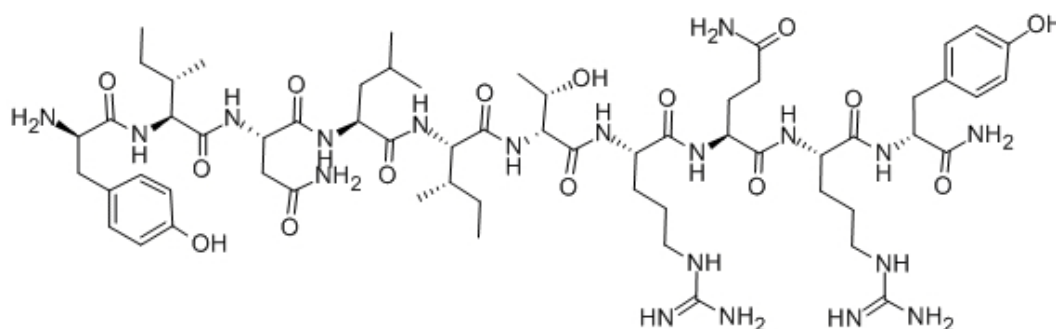


**[D-Tyr27, 36, D-Thr32]-Neuropeptide Y (27-36) (Rat)**

Catalog #	Source	Reactivity	Applications
CCP1672	Synthetic		
<b>Description</b>	Peptide to [D-Tyr27, 36, D-Thr32]-Neuropeptide Y (27-36) (Rat)		
<b>Biological Description</b>	<p>The modified NPY fragment inhibits feeding induced in the rat by hypothalamic NPY as well as the natural eating response induced by a 24h period of fasting.</p> <p>This peptide may act as an antagonist at one or more subtypes of the NPY receptor in the rat brain. A.K.Roscoe et al. showed that this analog produces a profound and sustained hypotension in two strains of rat which is suggested to be partially attributable to activity at histamine receptors.</p>		
<b>Form</b>	Lyophilized powder		
<b>CAS Number</b>	163887-48-7		
<b>Molecular Formula</b>	C61H99N19O15		
<b>Molecular Weight</b>	1338.60		
<b>Purity</b>	> 95%		
<b>Chemical Structure</b>	D - Tyr - Ile - Asn - Leu - Ile - D - Thr - Arg - Gln - Arg - D - Tyr - NH <sub>2</sub>		
<b>Storage/Stability</b>	Shipped at 4°C. Store at -20°C for one year.		

**Structure**



**Application key:** E- ELISA, WB- Western blot, IH- Immunohistochemistry, IF- Immunofluorescence, FC- Flow cytometry, IC- Immunocytochemistry, IP- Immunoprecipitation, CHIP- Chromatin Immunoprecipitation, EMSA- Electrophoretic Mobility Shift Assay, SE- Sandwich ELISA, CBE- Cell-based ELISA, RNAi- RNA interference

**Species reactivity key:** H- Human, M- Mouse, R- Rat, B- Bovine, C- Chicken, D- Dog, Mk- Monkey, P- Pig, Rb- Rabbit, S- Sheep, Z- Zebrafish

**COHESION BIOSCIENCES LIMITED**

**WEB**  
[www.cohesionbio.com](http://www.cohesionbio.com)

**ORDER**  
[order@cohesionbio.com](mailto:order@cohesionbio.com)

**SUPPORT**  
[techsupport@cohesionbio.com](mailto:techsupport@cohesionbio.com)

**CUSTOM**  
[custom@cohesionbio.com](mailto:custom@cohesionbio.com)