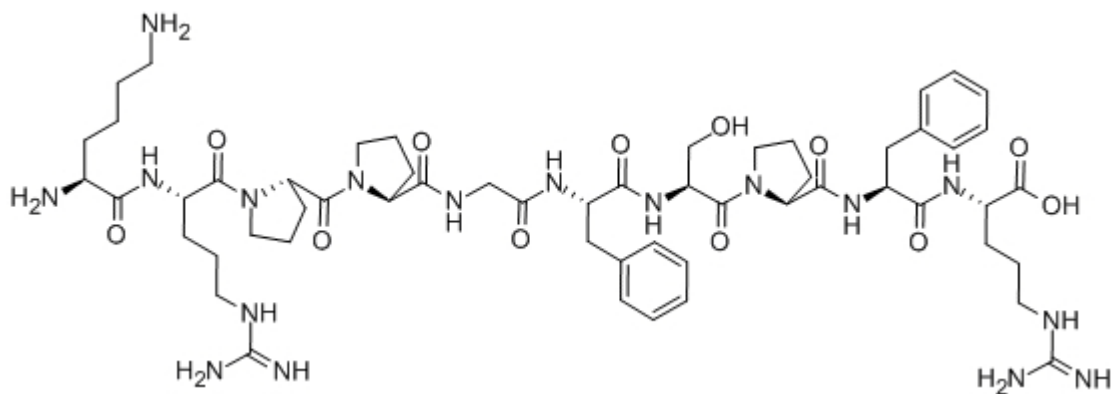


Kallidin

Catalog #	Source	Reactivity	Applications
CCP1655	Synthetic		

Description	Peptide to Kallidin
Biological Description	Kallidin is the precursor of the vasodilator bradykinin.
Form	Lyophilized powder
CAS Number	342-10-9
Molecular Formula	C ₅₆ H ₈₅ N ₁₇ O ₁₂
Molecular Weight	1188.41
Purity	> 95%
Chemical Structure	Lys - Arg - Pro - Pro - Gly - Phe - Ser - Pro - Phe - Arg
Storage/Stability	Shipped at 4°C. Store at -20°C for one year.

Structure



Application key: E- ELISA, WB- Western blot, IH- Immunohistochemistry, IF- Immunofluorescence, FC- Flow cytometry, IC- Immunocytochemistry, IP- Immunoprecipitation, ChIP- Chromatin Immunoprecipitation, EMSA- Electrophoretic Mobility Shift Assay, SE- Sandwich ELISA, CBE- Cell-based ELISA, RNAi- RNA interference

Species reactivity key: H- Human, M- Mouse, R- Rat, B- Bovine, C- Chicken, D- Dog, Mk- Monkey, P- Pig, Rb- Rabbit, S- Sheep, Z- Zebrafish

COHESION BIOSCIENCES LIMITED

WEB
www.cohesionbio.com

ORDER
order@cohesionbio.com

SUPPORT
techsupport@cohesionbio.com

CUSTOM
custom@cohesionbio.com