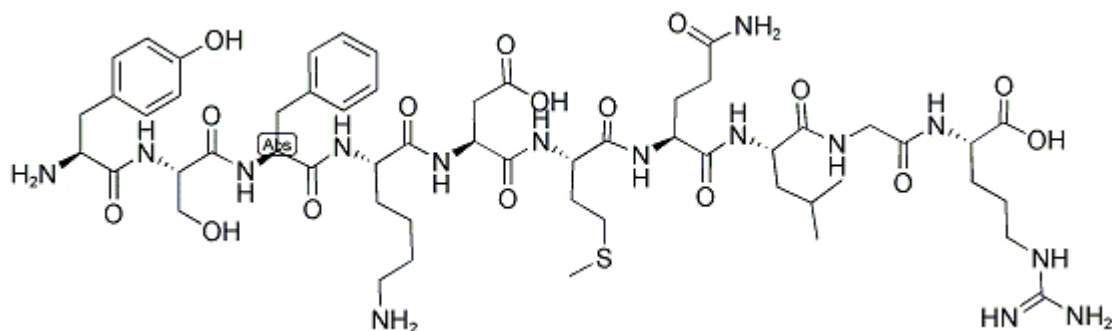


[Tyr65, Phe67]-C5a (65-74) (Human)

Catalog #	Source	Reactivity	Applications
CCP1651	Synthetic		
Description	Peptide to [Tyr65, Phe67]-C5a (65-74) (Human)		
Biological Description	[Tyr65, Phe67]-C5a (65-74), analog of the human C5a anaphylatoxin C-terminal region, behaves like a full agonist of natural complement 5a in its ability to induce shape change (polarization) and the release of β -glucuronidase from human neutrophils (PMNs).		
Form	Lyophilized powder		
CAS Number	157952-15-3		
Molecular Formula	C ₅₅ H ₈₅ N ₁₅ O ₁₆ S		
Molecular Weight	1244.45		
Purity	> 95%		
Chemical Structure	Tyr - Ser - Phe - Lys - Asp - Met - Gln - Leu - Gly - Arg		
Storage/Stability	Shipped at 4°C. Store at -20°C for one year.		

Structure



Application key: E- ELISA, WB- Western blot, IH- Immunohistochemistry, IF- Immunofluorescence, FC- Flow cytometry, IC- Immunocytochemistry, IP- Immunoprecipitation, CHIP- Chromatin Immunoprecipitation, EMSA- Electrophoretic Mobility Shift Assay, SE- Sandwich ELISA, CBE- Cell-based ELISA, RNAi- RNA interference

Species reactivity key: H- Human, M- Mouse, R- Rat, B- Bovine, C- Chicken, D- Dog, Mk- Monkey, P- Pig, Rb- Rabbit, S- Sheep, Z- Zebrafish

COHESION BIOSCIENCES LIMITED

WEB
www.cohesionbio.com

ORDER
order@cohesionbio.com

SUPPORT
techsupport@cohesionbio.com

CUSTOM
custom@cohesionbio.com