

## Ac-[Cys (Acm) 33, 42]-EGF (33-42) amide (Mouse)

Catalog #	Source	Reactivity	Applications
CCP1645	Synthetic		
<b>Description</b>	Peptide to Ac-[Cys (Acm) 33, 42]-EGF (33-42) amide (Mouse)		
<b>Biological Description</b>	This EGF-derived peptide is known as a laminin antagonist. It blocks the stimulatory effects of laminin in cell motility and chick angiogenesis. This peptide binds to a breast cancer- and endothelial cell-associated receptor, which is specific for residues 925 to 933 of the laminin B1 chain. The IC <sub>50</sub> values for displacement of laminin are in the range of 1-3 nM, depending on the cells. This peptide has an antimetastatic potential.		
<b>Form</b>	Lyophilized powder		
<b>CAS Number</b>	122053-92-3		
<b>Molecular Formula</b>	C51H82N16O17S2		
<b>Molecular Weight</b>	1255.45		
<b>Purity</b>	> 95%		
<b>Chemical Structure</b>	Ac - Cys(Acm) - Val - Ile - Gly - Tyr - Ser - Gly - Asp - Arg - Cys(Acm) - NH <sub>2</sub>		
<b>Storage/Stability</b>	Shipped at 4°C. Store at -20°C for one year.		
<b>Structure</b>			

**Application key:** E- ELISA, WB- Western blot, IH- Immunohistochemistry, IF- Immunofluorescence, FC- Flow cytometry, IC- Immunocytochemistry, IP- Immunoprecipitation, CHIP- Chromatin Immunoprecipitation, EMSA- Electrophoretic Mobility Shift Assay, SE- Sandwich ELISA, CBE- Cell-based ELISA, RNAi- RNA interference

**Species reactivity key:** H- Human, M- Mouse, R- Rat, B- Bovine, C- Chicken, D- Dog, Mk- Monkey, P- Pig, Rb- Rabbit, S- Sheep, Z- Zebrafish

### COHESION BIOSCIENCES LIMITED

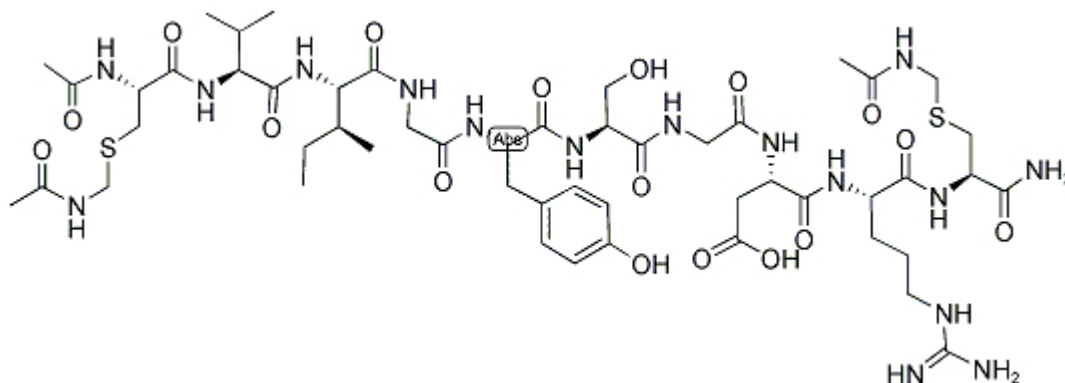
**WEB**  
[www.cohesionbio.com](http://www.cohesionbio.com)

**ORDER**  
[order@cohesionbio.com](mailto:order@cohesionbio.com)

**SUPPORT**  
[techsupport@cohesionbio.com](mailto:techsupport@cohesionbio.com)

**CUSTOM**  
[custom@cohesionbio.com](mailto:custom@cohesionbio.com)

# Product Data Sheet



**Application key:** E- ELISA, WB- Western blot, IH- Immunohistochemistry, IF- Immunofluorescence, FC- Flow cytometry, IC- Immunocytochemistry, IP- Immunoprecipitation, CHIP- Chromatin Immunoprecipitation, EMSA- Electrophoretic Mobility Shift Assay, SE- Sandwich ELISA, CBE- Cell-based ELISA, RNAi- RNA interference

**Species reactivity key:** H- Human, M- Mouse, R- Rat, B- Bovine, C- Chicken, D- Dog, Mk- Monkey, P- Pig, Rb- Rabbit, S- Sheep, Z- Zebrafish

## COHESION BIOSCIENCES LIMITED

**WEB**  
[www.cohesionbio.com](http://www.cohesionbio.com)

**ORDER**  
[order@cohesionbio.com](mailto:order@cohesionbio.com)

**SUPPORT**  
[techsupport@cohesionbio.com](mailto:techsupport@cohesionbio.com)

**CUSTOM**  
[custom@cohesionbio.com](mailto:custom@cohesionbio.com)