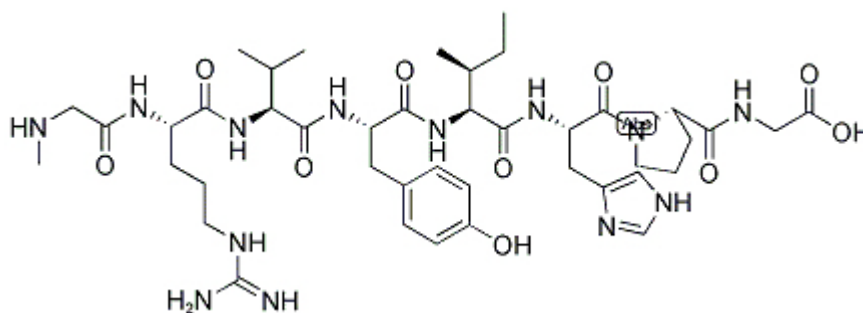


[Sar1, Gly8]-Angiotensin II

| Catalog # | Source | Reactivity | Applications |
|-------------------------------|---|------------|--------------|
| CCP1609 | Synthetic | | |
| Description | Peptide to [Sar1, Gly8]-Angiotensin II | | |
| Biological Description | [Sar1, Gly8]-Angiotensin II is an AT1 angiotensin II receptor subtype selective antagonist. | | |
| Form | Lyophilized powder | | |
| CAS Number | | | |
| Molecular Formula | C42H65N13O10 | | |
| Molecular Weight | 912.06 | | |
| Purity | > 95% | | |
| Chemical Structure | Sar - Arg - Val - Tyr - Ile - His - Pro - Gly | | |
| Storage/Stability | Shipped at 4°C. Store at -20°C for one year. | | |

Structure



Application key: E- ELISA, WB- Western blot, IH- Immunohistochemistry, IF- Immunofluorescence, FC- Flow cytometry, IC- Immunocytochemistry, IP- Immunoprecipitation, ChIP- Chromatin Immunoprecipitation, EMSA- Electrophoretic Mobility Shift Assay, SE- Sandwich ELISA, CBE- Cell-based ELISA, RNAi- RNA interference

Species reactivity key: H- Human, M- Mouse, R- Rat, B- Bovine, C- Chicken, D- Dog, Mk- Monkey, P- Pig, Rb- Rabbit, S- Sheep, Z- Zebrafish

COHESION BIOSCIENCES LIMITED

WEB
www.cohesionbio.com

ORDER
order@cohesionbio.com

SUPPORT
techsupport@cohesionbio.com

CUSTOM
custom@cohesionbio.com