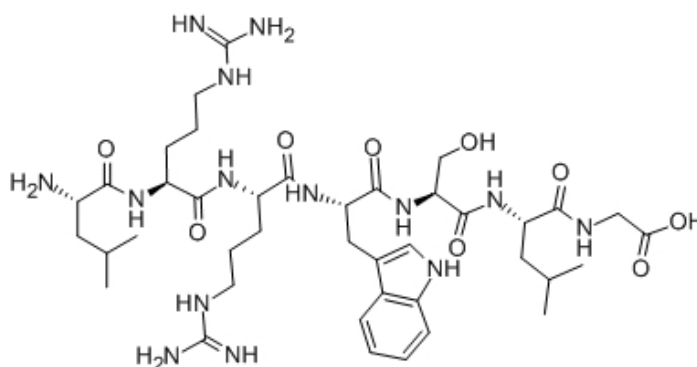


[Trp4]-Kemptide

Catalog #	Source	Reactivity	Applications
CCP1599	Synthetic		
Description	Peptide to [Trp4]-Kemptide		
Biological Description	Chocktide ([Trp4]-Kemptide) is readily phosphorylated by cAMP-dependent protein kinase. The phosphorylated peptide, in turn, is an effective substrate for phosphoprotein phosphatase. The changes in the substrate fluorescence intensity as a function of its phosphorylation state provide a sensitive assay of both enzyme activities.		
Form	Lyophilized powder		
CAS Number	80224-16-4		
Molecular Formula	C40H66N14O9		
Molecular Weight	887.05		
Purity	> 95%		
Chemical Structure	Leu - Arg - Arg - Trp - Ser - Leu - Gly		
Storage/Stability	Shipped at 4°C. Store at -20°C for one year.		

Structure



Application key: E- ELISA, WB- Western blot, IH- Immunohistochemistry, IF- Immunofluorescence, FC- Flow cytometry, IC- Immunocytochemistry, IP- Immunoprecipitation, ChIP- Chromatin Immunoprecipitation, EMSA- Electrophoretic Mobility Shift Assay, SE- Sandwich ELISA, CBE- Cell-based ELISA, RNAi- RNA interference

Species reactivity key: H- Human, M- Mouse, R- Rat, B- Bovine, C- Chicken, D- Dog, Mk- Monkey, P- Pig, Rb- Rabbit, S- Sheep, Z- Zebrafish

COHESION BIOSCIENCES LIMITED

WEB
www.cohesionbio.com

ORDER
order@cohesionbio.com

SUPPORT
techsupport@cohesionbio.com

CUSTOM
custom@cohesionbio.com