

## [D-Trp2]-Met-Enkephalin amide

Catalog #	Source	Reactivity	Applications
CCP1583	Synthetic		

**Description** Peptide to [D-Trp2]-Met-Enkephalin amide

### Biological Description

**Form** Lyophilized powder

### CAS Number

**Molecular Formula** C<sub>36</sub>H<sub>43</sub>N<sub>7</sub>O<sub>6</sub>S

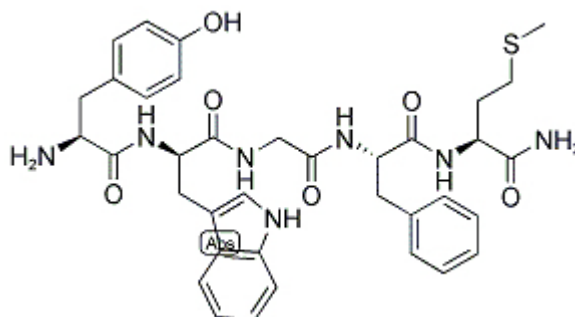
**Molecular Weight** 701.85

**Purity** > 95%

**Chemical Structure** Tyr - D - Trp - Gly - Phe - Met - NH<sub>2</sub>

**Storage/Stability** Shipped at 4°C. Store at -20°C for one year.

### Structure



**Application key:** E- ELISA, WB- Western blot, IH- Immunohistochemistry, IF- Immunofluorescence, FC- Flow cytometry, IC- Immunocytochemistry, IP- Immunoprecipitation, ChIP- Chromatin Immunoprecipitation, EMSA- Electrophoretic Mobility Shift Assay, SE- Sandwich ELISA, CBE- Cell-based ELISA, RNAi- RNA interference

**Species reactivity key:** H- Human, M- Mouse, R- Rat, B- Bovine, C- Chicken, D- Dog, Mk- Monkey, P- Pig, Rb- Rabbit, S- Sheep, Z- Zebrafish

## COHESION BIOSCIENCES LIMITED

**WEB**  
www.cohesionbio.com

**ORDER**  
order@cohesionbio.com

**SUPPORT**  
techsupport@cohesionbio.com

**CUSTOM**  
custom@cohesionbio.com