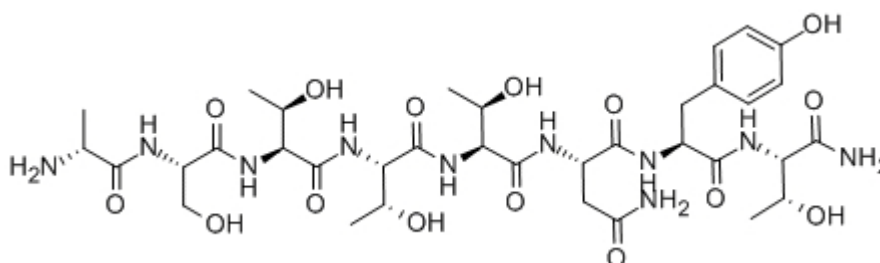


## [D-Ala1]-Peptide T amide

Catalog #	Source	Reactivity	Applications
CCP1579	Synthetic		
<b>Description</b>	Peptide to [D-Ala1]-Peptide T amide		
<b>Biological Description</b>	Potent analog of peptide T. DAPTA (aSTTTNYT-amide) showed a strong anti-HIV 1 activity in monocytes/macrophages, the peptide inhibits the entry of the virus.		
<b>Form</b>	Lyophilized powder		
<b>CAS Number</b>	106362-34-9		
<b>Molecular Formula</b>	C35H56N10O15		
<b>Molecular Weight</b>	856.89		
<b>Purity</b>	> 95%		
<b>Chemical Structure</b>	D - Ala - Ser - Thr - Thr - Thr - Asn - Tyr - Thr - NH <sub>2</sub>		
<b>Storage/Stability</b>	Shipped at 4°C. Store at -20°C for one year.		

### Structure



**Application key:** E- ELISA, WB- Western blot, IH- Immunohistochemistry, IF- Immunofluorescence, FC- Flow cytometry, IC- Immunocytochemistry, IP- Immunoprecipitation, ChIP- Chromatin Immunoprecipitation, EMSA- Electrophoretic Mobility Shift Assay, SE- Sandwich ELISA, CBE- Cell-based ELISA, RNAi- RNA interference

**Species reactivity key:** H- Human, M- Mouse, R- Rat, B- Bovine, C- Chicken, D- Dog, Mk- Monkey, P- Pig, Rb- Rabbit, S- Sheep, Z- Zebrafish

### COHESION BIOSCIENCES LIMITED

**WEB**  
www.cohesionbio.com

**ORDER**  
order@cohesionbio.com

**SUPPORT**  
techsupport@cohesionbio.com

**CUSTOM**  
custom@cohesionbio.com