

## [D-Ala2, D-Pro4, Tyr5]-Beta-Casomorphin (1-5) amide

Catalog #	Source	Reactivity	Applications
CCP1574	Synthetic		

**Description** Peptide to [D-Ala2, D-Pro4, Tyr5]-Beta-Casomorphin (1-5) amide

**Biological Description**

**Form** Lyophilized powder

**CAS Number** 83936-24-7

**Molecular Formula** C35H42N6O7

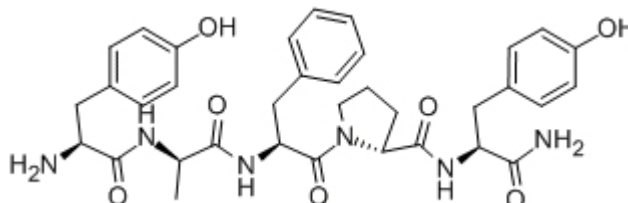
**Molecular Weight** 658.80

**Purity** > 95%

**Chemical Structure** Tyr - D - Ala - Phe - D - Pro - Tyr - NH<sub>2</sub>

**Storage/Stability** Shipped at 4°C. Store at -20°C for one year.

**Structure**



**Application key:** E- ELISA, WB- Western blot, IH- Immunohistochemistry, IF- Immunofluorescence, FC- Flow cytometry, IC- Immunocytochemistry, IP- Immunoprecipitation, CHIP- Chromatin Immunoprecipitation, EMSA- Electrophoretic Mobility Shift Assay, SE- Sandwich ELISA, CBE- Cell-based ELISA, RNAi- RNA interference

**Species reactivity key:** H- Human, M- Mouse, R- Rat, B- Bovine, C- Chicken, D- Dog, Mk- Monkey, P- Pig, Rb- Rabbit, S- Sheep, Z- Zebrafish

### COHESION BIOSCIENCES LIMITED

**WEB**  
www.cohesionbio.com

**ORDER**  
order@cohesionbio.com

**SUPPORT**  
techsupport@cohesionbio.com

**CUSTOM**  
custom@cohesionbio.com