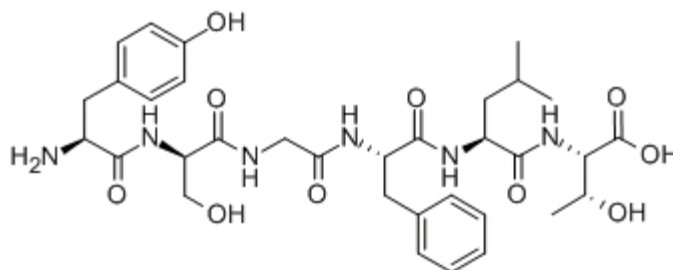


[D-Ser2]-Leu-Enkephalin-Thr

Catalog #	Source	Reactivity	Applications
CCP1564	Synthetic		

Description	Peptide to [D-Ser2]-Leu-Enkephalin-Thr
Biological Description	The hexapeptide DSLET exhibits a very high specificity for the δ -receptor.
Form	Lyophilized powder
CAS Number	75644-90-5
Molecular Formula	C ₃₃ H ₄₆ N ₆ O ₁₀
Molecular Weight	686.77
Purity	> 95%
Chemical Structure	Tyr - D - Ser - Gly - Phe - Leu - Thr
Storage/Stability	Shipped at 4°C. Store at -20°C for one year.

Structure



Application key: E- ELISA, WB- Western blot, IH- Immunohistochemistry, IF- Immunofluorescence, FC- Flow cytometry, IC- Immunocytochemistry, IP- Immunoprecipitation, CHIP- Chromatin Immunoprecipitation, EMSA- Electrophoretic Mobility Shift Assay, SE- Sandwich ELISA, CBE- Cell-based ELISA, RNAi- RNA interference

Species reactivity key: H- Human, M- Mouse, R- Rat, B- Bovine, C- Chicken, D- Dog, Mk- Monkey, P- Pig, Rb- Rabbit, S- Sheep, Z- Zebrafish

COHESION BIOSCIENCES LIMITED

WEB
www.cohesionbio.com

ORDER
order@cohesionbio.com

SUPPORT
techsupport@cohesionbio.com

CUSTOM
custom@cohesionbio.com