

[D-Ala2, Met5]-Beta-Casomorphin (1-5) (Bovine)

Catalog #	Source	Reactivity	Applications
CCP1558	Synthetic		

Description Peptide to [D-Ala2, Met5]-Beta-Casomorphin (1-5) (Bovine)

Biological Description

Form Lyophilized powder

CAS Number

Molecular Formula C31H41N5O7S

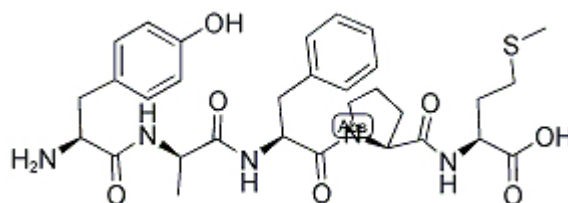
Molecular Weight 627.78

Purity > 95%

Chemical Structure Tyr - D - Ala - Phe - Pro - Met

Storage/Stability Shipped at 4°C. Store at -20°C for one year.

Structure



Application key: E- ELISA, WB- Western blot, IH- Immunohistochemistry, IF- Immunofluorescence, FC- Flow cytometry, IC- Immunocytochemistry, IP- Immunoprecipitation, CHIP- Chromatin Immunoprecipitation, EMSA- Electrophoretic Mobility Shift Assay, SE- Sandwich ELISA, CBE- Cell-based ELISA, RNAi- RNA interference

Species reactivity key: H- Human, M- Mouse, R- Rat, B- Bovine, C- Chicken, D- Dog, Mk- Monkey, P- Pig, Rb- Rabbit, S- Sheep, Z- Zebrafish

COHESION BIOSCIENCES LIMITED

WEB
www.cohesionbio.com

ORDER
order@cohesionbio.com

SUPPORT
techsupport@cohesionbio.com

CUSTOM
custom@cohesionbio.com