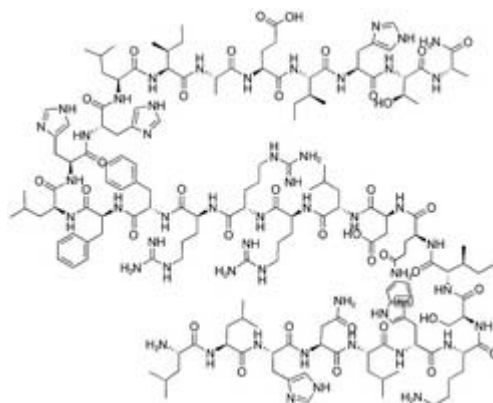


[Asn10, Leu11, D-Trp12]-PTH-RP (7-34) amide (Human, Rat)

Catalog #	Source	Reactivity	Applications
CCP1526	Synthetic		
Description	Peptide to [Asn10, Leu11, D-Trp12]-PTH-RP (7-34) amide (Human, Rat)		
Biological Description	This pTHrP (7-34) amide analog was found to be an effective antagonist of pTH-stimulated cAMP production in ROS cells and was shown not to display partial agonism.		
Form	Lyophilized powder		
CAS Number			
Molecular Formula	C162H254N50O36		
Molecular Weight	3478.11		
Purity	> 95%		
Chemical Structure	Leu - Leu - His - Asn - Leu - D - Trp - Lys - Ser - Ile - Gln - Asp - Leu - Arg - Arg - Arg - Phe - Phe - Leu - His - His - Leu - Ile - Ala - Glu - Ile - His - Thr - Ala - NH ₂		
Storage/Stability	Shipped at 4°C. Store at -20°C for one year.		
Structure			



Application key: E- ELISA, WB- Western blot, IH- Immunohistochemistry, IF- Immunofluorescence, FC- Flow cytometry, IC- Immunocytochemistry, IP- Immunoprecipitation, ChIP- Chromatin Immunoprecipitation, EMSA- Electrophoretic Mobility Shift Assay, SE- Sandwich ELISA, CBE- Cell-based ELISA, RNAi- RNA interference

Species reactivity key: H- Human, M- Mouse, R- Rat, B- Bovine, C- Chicken, D- Dog, Mk- Monkey, P- Pig, Rb- Rabbit, S- Sheep, Z- Zebrafish

COHESION BIOSCIENCES LIMITED

WEB
www.cohesionbio.com

ORDER
order@cohesionbio.com

SUPPORT
techsupport@cohesionbio.com

CUSTOM
custom@cohesionbio.com