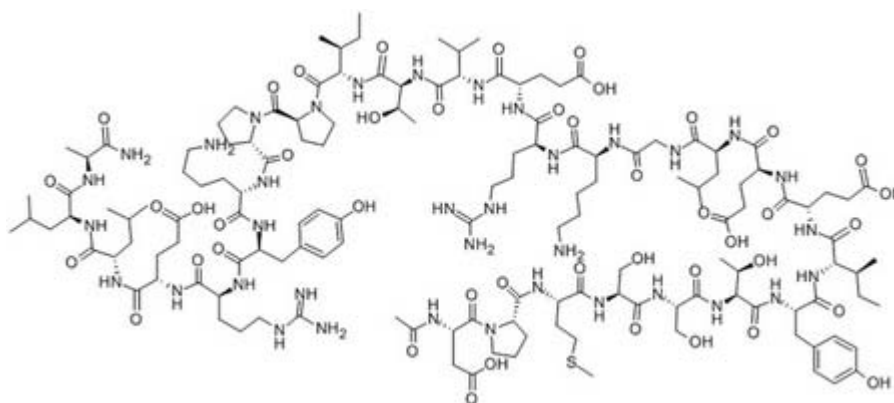


## Ac-Calpastatin (184-210) (Human)

Catalog #	Source	Reactivity	Applications
CCP1510	Synthetic		
<b>Description</b>	Peptide to Ac-Calpastatin (184-210) (Human)		
<b>Biological Description</b>	Ac-Calpastatin (184-210) (Human), a calpain inhibitor homologous to the minimal inhibitory domain I of human calpastatin, was shown to modulate the amyloid $\beta$ -protein 42 secretion ratio. This finding might point to the possibility of exploring compounds that inhibit A $\beta$ 42 secretion.		
<b>Form</b>	Lyophilized powder		
<b>CAS Number</b>	123714-50-1		
<b>Molecular Formula</b>	C142H230N36O44S		
<b>Molecular Weight</b>	3177.68		
<b>Purity</b>	> 95%		
<b>Chemical Structure</b>	Ac - Asp - Pro - Met - Ser - Ser - Thr - Tyr - Ile - Glu - Glu - Leu - Gly - Lys - Arg - Glu - Val - Thr - Ile - Pro - Pro - Lys - Tyr - Arg - Glu - Leu - Leu - Ala - NH <sub>2</sub>		
<b>Storage/Stability</b>	Shipped at 4°C. Store at -20°C for one year.		

### Structure



**Application key:** E- ELISA, WB- Western blot, IH- Immunohistochemistry, IF- Immunofluorescence, FC- Flow cytometry, IC- Immunocytochemistry, IP- Immunoprecipitation, ChIP- Chromatin Immunoprecipitation, EMSA- Electrophoretic Mobility Shift Assay, SE- Sandwich ELISA, CBE- Cell-based ELISA, RNAi- RNA interference

**Species reactivity key:** H- Human, M- Mouse, R- Rat, B- Bovine, C- Chicken, D- Dog, Mk- Monkey, P- Pig, Rb- Rabbit, S- Sheep, Z- Zebrafish

### COHESION BIOSCIENCES LIMITED

**WEB**  
[www.cohesionbio.com](http://www.cohesionbio.com)

**ORDER**  
[order@cohesionbio.com](mailto:order@cohesionbio.com)

**SUPPORT**  
[techsupport@cohesionbio.com](mailto:techsupport@cohesionbio.com)

**CUSTOM**  
[custom@cohesionbio.com](mailto:custom@cohesionbio.com)

# Product Data Sheet

**Application key:** E- ELISA, WB- Western blot, IH- Immunohistochemistry, IF- Immunofluorescence, FC- Flow cytometry, IC- Immunocytochemistry, IP- Immunoprecipitation, CHIP- Chromatin Immunoprecipitation, EMSA- Electrophoretic Mobility Shift Assay, SE- Sandwich ELISA, CBE- Cell-based ELISA, RNAi- RNA interference

**Species reactivity key:** H- Human, M- Mouse, R- Rat, B- Bovine, C- Chicken, D- Dog, Mk- Monkey, P- Pig, Rb- Rabbit, S- Sheep, Z- Zebrafish

## COHESION BIOSCIENCES LIMITED

**WEB**

[www.cohesionbio.com](http://www.cohesionbio.com)

**ORDER**

[order@cohesionbio.com](mailto:order@cohesionbio.com)

**SUPPORT**

[techsupport@cohesionbio.com](mailto:techsupport@cohesionbio.com)

**CUSTOM**

[custom@cohesionbio.com](mailto:custom@cohesionbio.com)