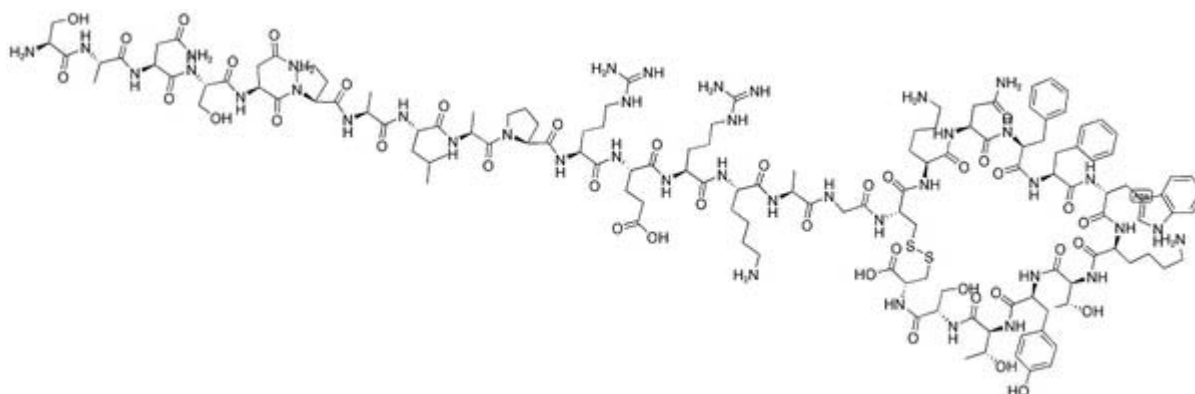


[Leu8, D-Trp22, Tyr25]-Somatostatin-28

Catalog #	Source	Reactivity	Applications
CCP1503	Synthetic		
Description	Peptide to [Leu8, D-Trp22, Tyr25]-Somatostatin-28		
Biological Description	This somatostatin analog which can be iodinated has been used to characterize somatostatin binding sites in rat brain and hamster insulinoma membranes.		
Form	Lyophilized powder		
CAS Number	77909-99-0		
Molecular Formula	C138H209N41O40S2		
Molecular Weight	3146.58		
Purity	> 95%		
Chemical Structure	Ser - Ala - Asn - Ser - Asn - Pro - Ala - Leu - Ala - Pro - Arg - Glu - Arg - Lys - Ala - Gly - Cys - Lys - Asn - Phe - Phe - D - Trp - Lys - Thr - Tyr - Thr - Ser - Cys (Disulfide bridge Cys17 - Cys28)		
Storage/Stability	Shipped at 4°C. Store at -20°C for one year.		

Structure



Application key: E- ELISA, WB- Western blot, IH- Immunohistochemistry, IF- Immunofluorescence, FC- Flow cytometry, IC- Immunocytochemistry, IP- Immunoprecipitation, ChIP- Chromatin Immunoprecipitation, EMSA- Electrophoretic Mobility Shift Assay, SE- Sandwich ELISA, CBE- Cell-based ELISA, RNAi- RNA interference

Species reactivity key: H- Human, M- Mouse, R- Rat, B- Bovine, C- Chicken, D- Dog, Mk- Monkey, P- Pig, Rb- Rabbit, S- Sheep, Z- Zebrafish

COHESION BIOSCIENCES LIMITED

WEB
www.cohesionbio.com

ORDER
order@cohesionbio.com

SUPPORT
techsupport@cohesionbio.com

CUSTOM
custom@cohesionbio.com